

BPW Original spare parts
Series SH / SKH / S..LL

SH

SKH

BPW Original spare parts


S..LL

1 Axle type explanation (extract)

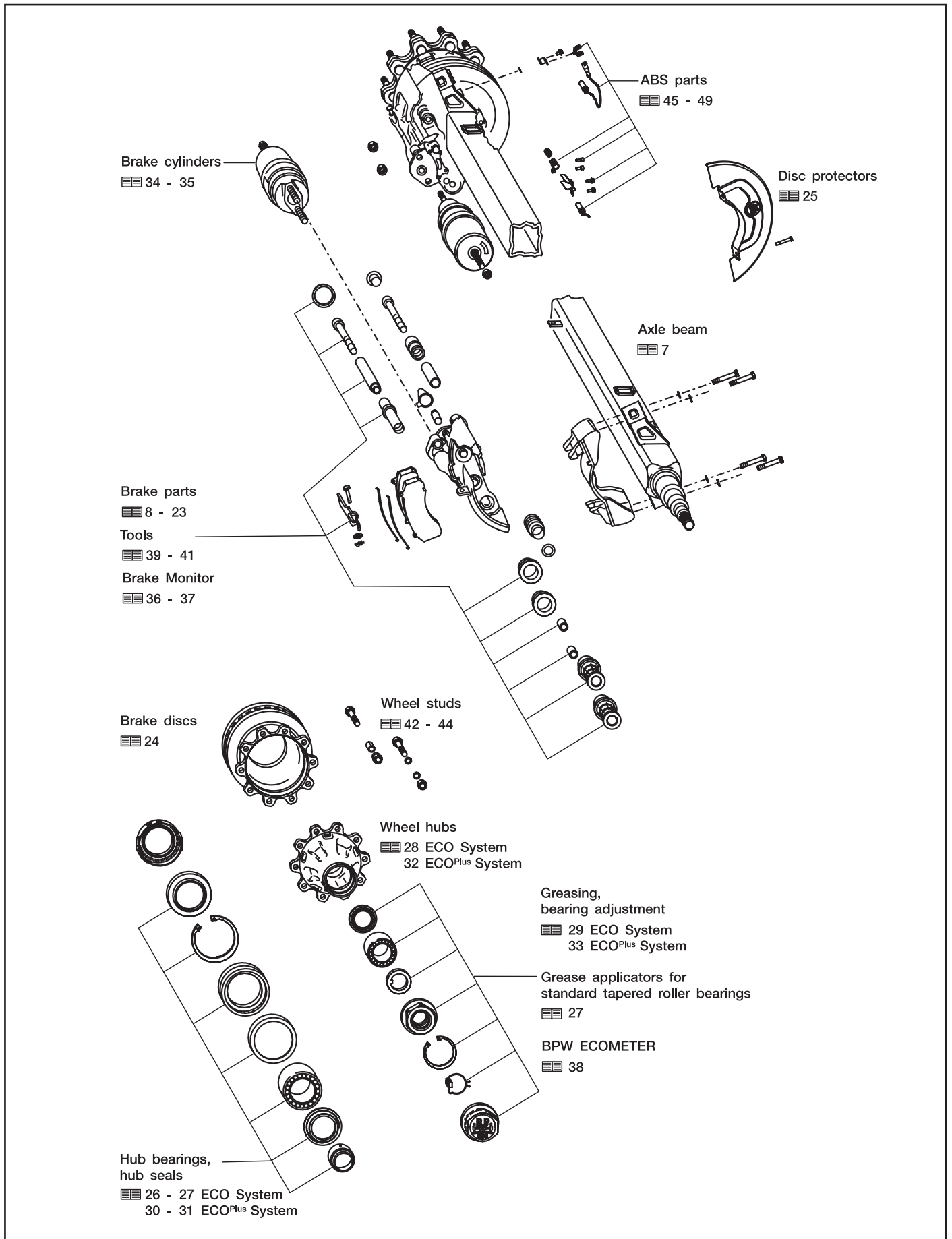
Example:							
SKH	S	F	LL	9010	- 15	ECOPlus	
				Trailer axle			
				Series	Brake	Tyres	Year of manufacture
SH				SH	SB 4345	22.5" / 24"	from 1996
SH				SH	SB 4309	22.5"	from 5/2003
SKH				SKH	SB 3745	19.5" (22.5")	from 1998
	B						For single wheels, wheels with offset (120)
	S						For single wheels, wheels without offset
							For twin wheels
		F					M 22 x 1.5 wheel studs without wheel nuts, wheel nuts for stud or hub centring separate
							For hub centring/aluminium wheel connection
			LL				LL series self-steering axle, steering angle max. 20°
				8008 up to 12010			Axle load & number of wheel studs per wheel
					-15 up to -24	Axle load & number of wheel studs per wheel	
						12° up to 40°	Steering angle in steering axles
					ECO		ECO hub system
					ECO MAXX		Weight optimized trailer axle with ECO hub system
					ECOPlus		Weight optimized trailer axle with ECOPlus hub system

2 Code number explanation (extract)

Example:			
27	48	612	000
Trailer axle			
27.			Trailer axle without suspension parts
	48.		Axle load 8000 - 9000 kg
			Tapered roller bearings 33118 / 33213
			Axle series SH.. / SKH.. ECOPlus
	50.		Axle load 10000 - 12000 kg
			Tapered roller bearings 33118 / 33213
			Axle series SH.. / SKH.. ECOPlus
	609.		SB 4345, axial screw connection Disc brake diameter 430 mm 1996 - 4/2003
	610.		SB 3745, tangential screw connection Disc brake diameter 370 mm 1996 - 4/2003
	612.		SB 3745, tangential screw connection Disc brake diameter 370 mm from 5/2003
	613.		SB 4309, tangential screw connection Disc brake diameter 430 mm from 5/2003
	614.		SB 4345, tangential screw connection Disc brake diameter 430 mm from 5/2003
		000	Serial number (internal depending on track, ABS, etc.)

 See page 5 for features of the axial or tangential screw connection (connection of the brake)!

3 Exploded view of a rigid disc brake axle



4 Table of Contents

	Page
1	Axle type explanation (extract) 2
2	Code number explanation (extract) 2
3	Exploded view of a rigid disc brake axle 3
4	Table of contents 4
5	Type plate explanation 5
6	Disc brake/axle beam connection 5
7	Series 6
8	Conventional brake / monoblock brake 6
9	Axle beams 7
10	SB 3745, axial screw connection, conventional brake 8 - 11
11	SB 3745, axial screw connection, monoblock construction 12 - 13
12	SB 3745, tangential screw connection, monoblock construction 14 - 15
13	SB 4309, tangential screw connection, monoblock construction 16 - 17
14	SB 4345, axial screw connection, conventional brake 18 - 19
15	SB 4345, axial screw connection, monoblock construction 20 - 21
16	SB 4345, tangential screw connection, monoblock construction 22 - 23
17	Brake discs 24
18	Disc protectors 25
19	ECO, ECO MAXX hub bearings 26 - 27
20	Grease applicators for standard tapered roller bearings 27
21	ECO wheel hubs 28
22	Greasing, bearing adjustment of ECO, ECO MAXX 29
23	ECO ^{Plus} hub bearings 30 - 31
24	ECO ^{Plus} wheel hubs 32
25	Grease filling, bearing adjustment of ECO ^{Plus} 33
26	Brake cylinder 34 - 35
27	Brake Monitor 36 - 37
28	ECOMETER 38
29	Tools for disc brakes 39 - 41
30	Wheel studs 42 - 44
31	ABS parts 45 - 49

Date: 01.04.2005

Subject to modifications!

Type plate explanation 5

Riveted type plate up to year of manufacture 1999

BPW BERGISCHE ACHSEN KG
D 51674 WIEHL GERMANY
24 . 38 . 609 . 138 984951842
SHSF 9010 ECO-MAXX BPW SB
zul. Achslast kg STAT. 9000 v max. km/h
perm. axle capacity max. speed 105
charge adm. TECH. 11550 vitesse maxi.
TYP D 115 TDB/ 0568

Stat. = Max. static axle load on ground
Tech. = "Permissible techn. axle load"
= Test load of wheel brakes

Self-adhesive type plate up to week 9/2004

BPW BERGISCHE ACHSEN KG D-51674 Wiehl Germany
SKHSF 9010 ECO-P SB 3745
27.48.612.101 Bj. 034350051
TYP D 115-1 TDB 0562
zul. Achslast perm. axle capacity charge adm. stat. 9000 kg 105 km/h

Self-adhesive type plate from week 10/2004

BPW BERGISCHE ACHSEN KG D-51674 Wiehl Germany
SHSF 9010 ECO-P SB 4309
27.48.613.002 Bj. 045040209
D115TDB0787
zul. Achslast perm. axle capacity charge adm. stat. 9000 kg 105 km/h

Expanded test report line

The BPW type name is composed of a letter group and a number group. The letter group identifies the type of axle and suspension version as well as defining the hub version. The number group specifies the axle load on the ground in kilograms and the number of wheel studs per wheel hub (for disc wheel connection). You can view the brake certificate referenced by certificate type/test report number on the type plate by logging onto the BPW website at www.bpw.de (Download Centre in the German version of the website - "Bremsgutachten"). Please note that as of 10/2004, multiple entries are possible in brake certificates. All BPW components and assemblies have a 10-digit "speaking" code number.


Disc brake / axle beam connection 6

<p style="background-color: #ADD8E6; border-radius: 15px; padding: 5px; display: inline-block;">Version before 4/2003</p>	<p style="background-color: #ADD8E6; border-radius: 15px; padding: 5px; display: inline-block;">Version after 5/2003</p>
<p>Feature of axial screw connection:</p> <p>Disc brakes are bolted onto the brake anchor plate of the axle axially (in the direction of the axle beam).</p>	<p>Feature of tangential screw connection:</p> <p>Disc brakes are bolted onto the brake anchor plate of the axle tangentially.</p> <ul style="list-style-type: none"> ● Same brake disc for 0 and 120 offset ● Screw connection points are easier to reach ● Easier to install with standard tools ● Faster to install because fewer mounting bolts are used

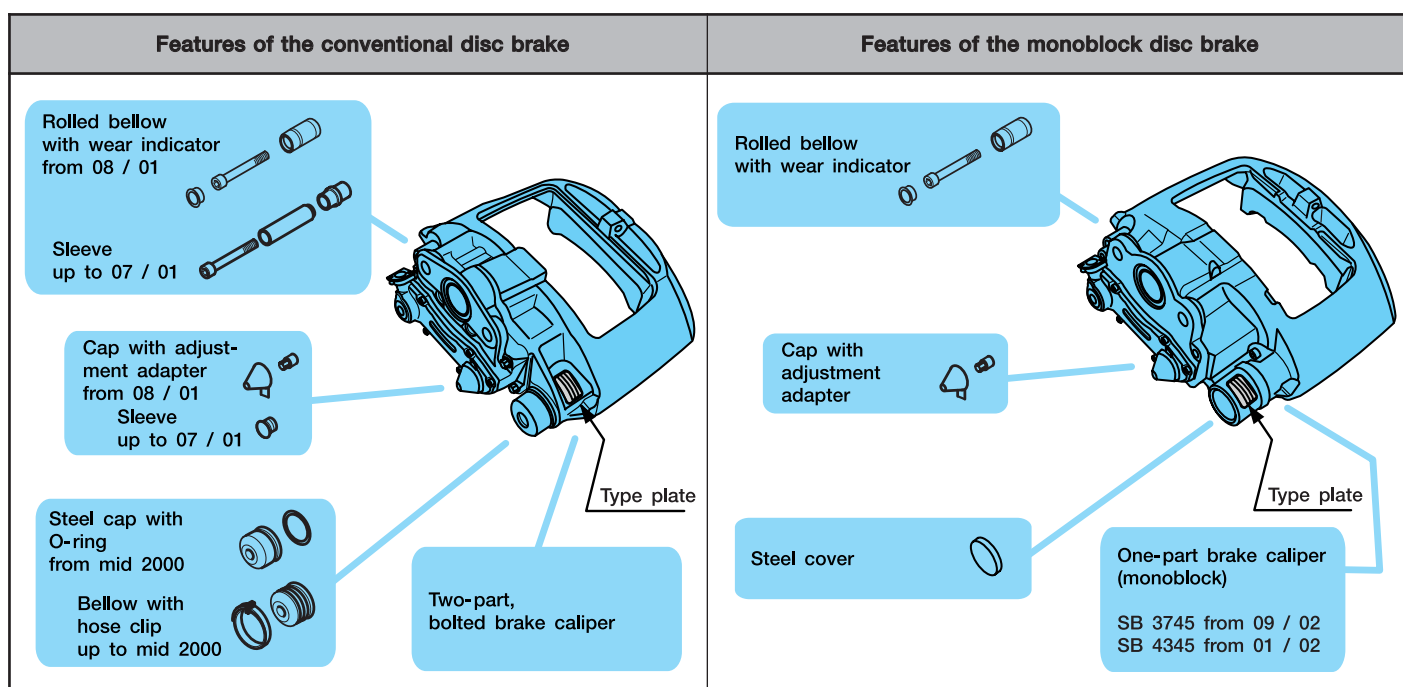
All axle beams were changed over to disc brakes with tangential screw connections in 5/2003. This means axle beams for axially screwed brakes are no longer available.

7 Series

	BPW Disc brakes				
	Disc brake light SB 3745		Disc brake light SBR 3745	Disc brake medium SB 4309	Disc brake heavy duty SB 4345
	Rigid axles	Steering axles	Rigid axles	Rigid axles	Rigid axles
Axial screw connection, conventional brake	05.362.70.16.0 / 17.0	05.362.70.22.0 / 23.0	05.362.70.28.0 / 29.0		05.362.70.12.0 / 13.0
	05.362.70.26.0 / 27.0	05.362.70.22.1 / 23.1			05.362.70.24.0 / 25.0
	05.362.70.26.1 / 27.1	05.362.70.22.2 / 23.2			
	05.362.70.26.2 / 27.2				
Axial screw connection, monoblock brake	05.362.70.36.0 / 37.0	05.362.70.40.0 / 41.0	05.362.70.30.0 / 31.0		05.362.70.32.0 / 33.0
	05.362.70.36.1 / 37.1	05.362.70.40.1 / 41.1			05.362.70.34.0 / 35.0
	05.362.70.36.2 / 37.2				05.362.70.38.0 / 39.0
					05.362.70.38.1 / 39.1
					05.362.70.38.2 / 39.2
					05.362.70.42.0 / 43.0
					05.362.70.42.1 / 43.1
					05.362.70.42.2 / 43.2
Tangential screw connection, monoblock brake	05.362.70.60.0 / 61.0			05.362.70.62.0 / 63.0	05.362.70.64.0 / 65.0
	05.362.70.60.2 / 61.2			05.362.70.62.1 / 63.1	05.362.70.64.2 / 65.2
	05.362.70.60.3 / 61.3			05.362.70.70.0 / 71.0	05.362.70.64.3 / 65.3
	05.362.70.66.0 / 67.0			05.362.70.70.1 / 71.1	05.362.70.68.0 / 69.0
					05.362.70.68.1 / 69.1

 SBR 3745 = SB 3745 with radial adapter

8 Conventional brake / monoblock brake

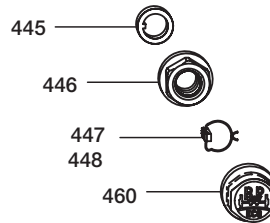
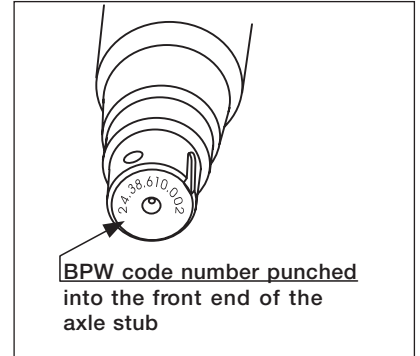
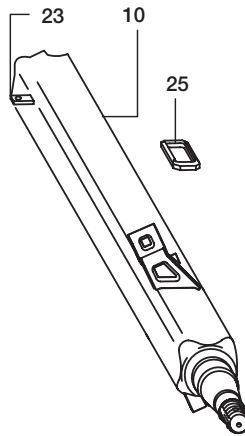


Rigid axles:

Replacement axle beams are available on request!

Specify the axle type and BPW code number (type plate or front end of axle stub) when ordering replacement axle beams.

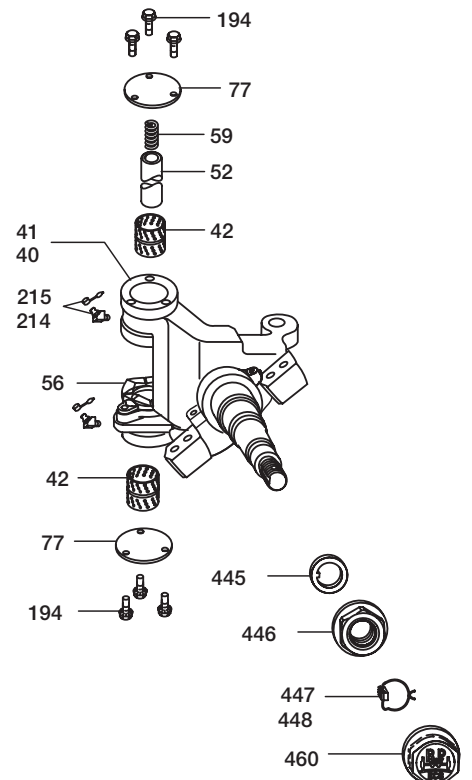
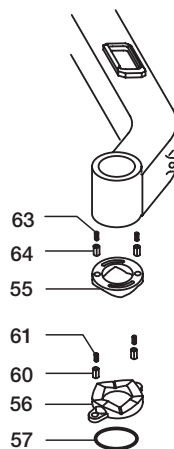
All axle beams were changed over to disc brakes with tangential screw connections in 5/2003. This means axle beams for axially screwed brakes are no longer available!



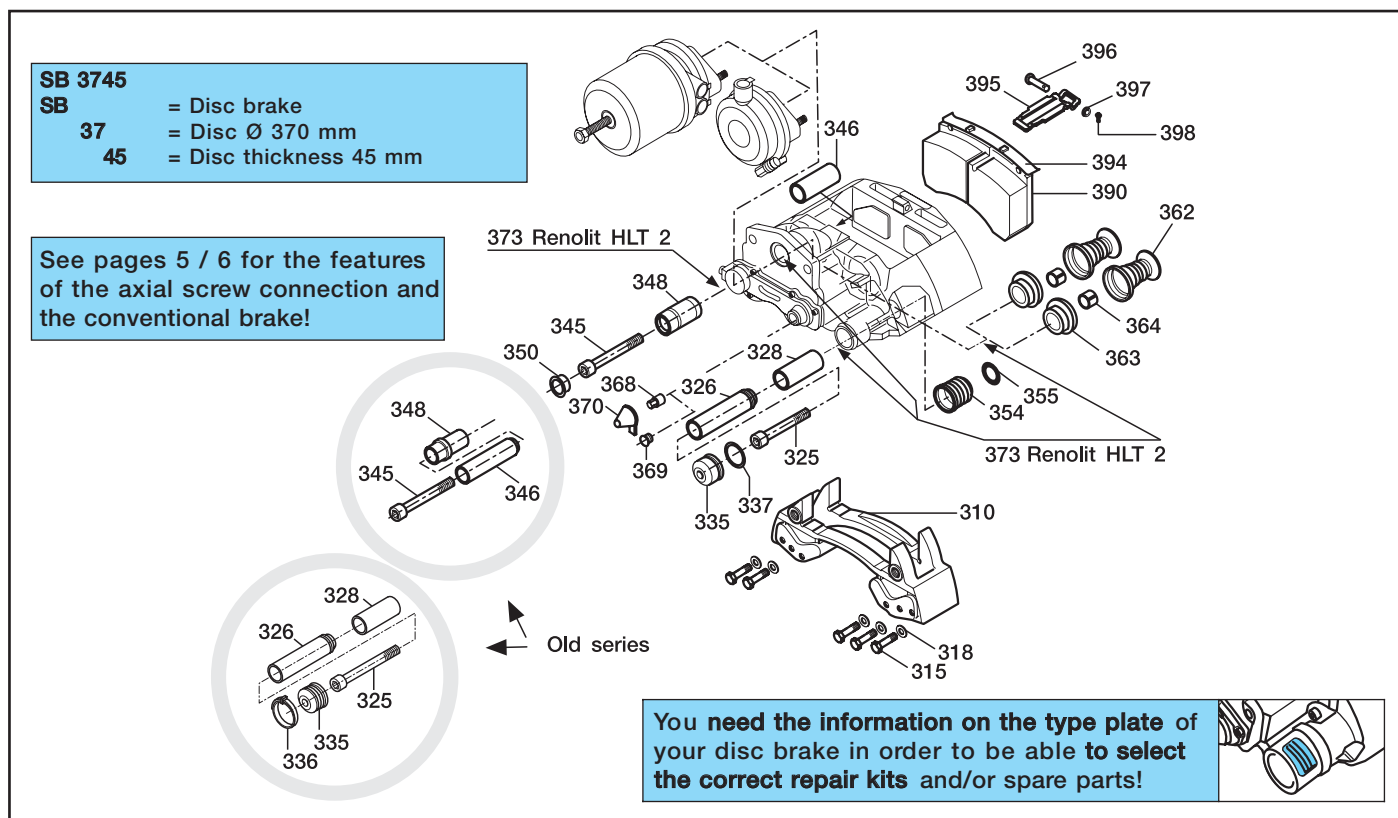
Steering axles:

Replacement axle beams and steering pivot assemblies are available on request!

Specify the axle type and BPW code number (type plate) when ordering the replacement axle beams.



10 Brake parts - SB 3745, axial screw connection, conventional brake



SB 3745, axial screw connection, conventional brake

Item	Description	BPW code no.	Allocation	Dimension, remark	Qty.
	Brake cpl.	05.362.70.16.0 / 17.0 05.362.70.22.0 / 23.0 05.362.70.22.1 / 23.1 05.362.70.22.2 / 23.2 05.362.70.26.0 / 27.0 05.362.70.26.1 / 27.1 05.362.70.26.2 / 27.2 05.362.70.28.0 / 29.0	A A A B A A B B		
310	Brake caliper carrier	02.0313.13.00		For one axle side	1
315	Hexagon bolt (for one axle)	02.5029.87.20		M 16 x 1.5 x 60 - 10.9	10
318	Washer (for one axle)	02.5401.16.08		A 17	10
323	Repair kit - guide pin / seal parts	09.801.06.24.0	B	Contents per axle side	1
	(Item 325, 326, 328, 345, 346, 348, 350, 352, 373)				
325	Cylinder cap screw	02.5015.72.15		M 16 x 1.5 x 86	1
326	Bush (guide sleeve)	02.0316.97.00		Ø 17 x 36 x 116	1
328	Guide bush	02.0315.36.00		Ø 36 / 40 x 82	1
345	Cylinder cap screw	02.5015.73.15		M 16 x 1.5 x 80	1
346	Bush	02.0314.06.00		Ø 17 / 32 x 80	1
348	Guide sleeve	02.1410.21.00		Ø stop ring = 39!	1
350	Cap	02.1827.07.00			1
352	Repair kit - seal for guide pins	09.801.06.11.0			1
373	Renolit HLT 2	02.1040.40.00		5 g tube	2

Brake parts - SB 3745, axial screw connection, conventional brake

10

SB 3745, axial screw connection, conventional brake

Item	BPW code no.	BPW code no.	Allocation	Dimension, remark	Qty.
352	Repair kit - seal for guide pins (Item 335, 337, 354, 355, 369)	09.801.06.11.0	A + B	Contents per axle side	1
335	Cap (Steel cap)	02.1827.06.00			1
337	O-ring	02.5677.98.00		Ø 47 x 2,6	1
354	Bellow	02.1011.24.00		Ø 44 / 30 x 37.8	1
355	Ring	02.5683.74.00		Ø 50 / 36.5 x 5.4	1
369	Cap	02.1827.04.00			1
323	Repair kit - guide pin / seal parts (Item 325, 326, 328, 345, 346, 348, 350, 352, 373)	09.801.06.31.0	A	Contents per axle side	1
325	Cylinder cap screw	02.5015.72.15		M 16 x 1.5 x 86	1
326	Bush (Guide sleeve)	02.0316.97.00		Ø 17 x 36 x 116	1
328	Guide bush	02.0315.36.00		Ø 36 / 40 x 82	1
345	Cylinder cap screw	02.5015.73.15		M 16 x 1.5 x 80	1
346	Bush	02.0314.06.00		Ø 17 / 32 x 80	1
348	Guide sleeve	02.1410.22.00		Ø stop ring = 35!	1
350	Cap	02.1827.07.00			1
352	Repair kit - seal for guide pins	09.801.06.11.0			1
373	Renolit HLT 2	02.1040.40.00		5 g tube	2
344	Repair kit - loose bearing (Item 345, 346, 348, 350, 373)	09.801.06.91.0	B	Contents per axle side	1
345	Cylinder cap screw	02.5015.73.15		M 16 x 1.5 x 80	1
346	Bush	02.0314.06.00		Ø 17 / 32 x 80	1
348	Guide sleeve	02.1410.21.00		Ø stop ring = 39!	1
350	Cap	02.1827.07.00			1
373	Renolit HLT 2	02.1040.40.00		5 g tube	1
344	Repair kit - loose bearing (Item 345, 346, 348, 350, 373)	09.801.06.90.0	A	Contents per axle side	1
345	Cylinder cap screw	02.5015.73.15		M 16 x 1.5 x 80	1
346	Bush	02.0314.06.00		Ø 17 / 32 x 80	1
348	Guide sleeve	02.1410.22.00		Ø stop ring = 35!	1
350	Cap	02.1827.07.00			1
373	Renolit HLT 2	02.1040.40.00		5 g tube	1
333	Repair kit - bellows / hose clip (Item 335, 336)	09.801.02.58.0	A + B	Contents for one axle	1
335	Bellow	02.1011.25.00		Ø 46 x 38	2
336	Hose clip	02.3502.38.00			2
352	Repair kit - seal for guide pins (Item 335, 336, 354, 355, 369)	09.801.02.60.0		Contents per axle side	1
335	Bellow	02.1011.25.00		Ø 46 x 38	1
336	Hose clip	02.3502.38.00			1
354	Bellow	02.1011.24.00		Ø 44 / 30 x 37.8	1
355	Ring	02.5683.74.00		Ø 36.6 / 50 x 5.4	1
369	Cap	02.1827.04.00			1
360	Repair kit - tappet parts with bellows (Item 362, 363, 364, 373)	09.801.02.63.0	A + B	Contents per axle side	1
362	Thrust piece with bellows	02.0608.14.00			2

10 Brake parts - SB 3745, axial screw connection, conventional brake

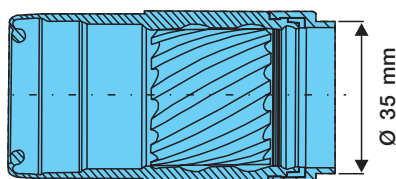
SB 3745, axial screw connection, conventional brake					
Item	BPW code no.	BPW code no.	Allocation	Dimension, remark	Qty.
363	Seal	02.0611.06.00 ¹⁾		See remark!	2
364	Bush	02.0315.56.00		Ø 16 / 18 x 10	2
373	Renolit HLT 2	02.1040.40.00		5 g tube	1
367	Repair kit - adjuster adapter, (interchangeable adapter) (Item 368, 370)	09.801.06.25.0	A + B	Contents per axle side	1
368	Adjuster adapter	02.2400.11.00			1
370	Cap	02.1827.08.00		Ø 38	1
370	Cap	02.1827.09.00		Ø 35	1
388	Repair kit - brake lining, Textar T 3030 brake lining (Item 368, 369, 370, 390, 394, 396, 397, 398)	09.801.06.43.0	A + B	Only available as complete kit! Contents for one axle	1
368	Adjuster adapter	02.2400.11.00			2
369	Cap	02.1827.04.00			2
370	Cap	02.1827.08.00		Ø 38	2
370	Cap	02.1827.09.00		Ø 35	2
390	Pad	05.092.90.05.0			4
394	Clamping spring for brake lining	02.3319.01.00			4
396	Bolt	02.5829.22.31		Ø 10 x 48 / 52	2
397	Washer	02.5404.10.04		10.5 / DIN 433	2
398	Lock	02.3301.31.00			2
393	Repair kit - lining retention clip (Item 395, 396, 397, 398)	09.801.02.76.0	A + B	Contents for one axle	1
395	Brake pad retention clip	02.0305.22.00			2
396	Bolt	02.5829.22.31		Ø 10 x 48 / 52	2
397	Washer	02.5404.10.04		10.5 / DIN 433	2
398	Lock	02.3301.31.00			2

1) If the disc brake is equipped with a black "inside seal" (item 363) then do not fit the set with the white "inside seal" under any circumstances!

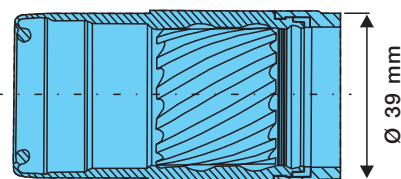


Some of the aforementioned repair kits only differ in the design of item 348 (guide sleeve). To determine which version you need, refer to the brake type plate or check the dimensions directly on the brake.

Guide sleeve 02.1410.22.00 - Ø Stop ring = 35 mm



Guide sleeve 02.1410.21.00 - Ø Stop ring = 39 mm



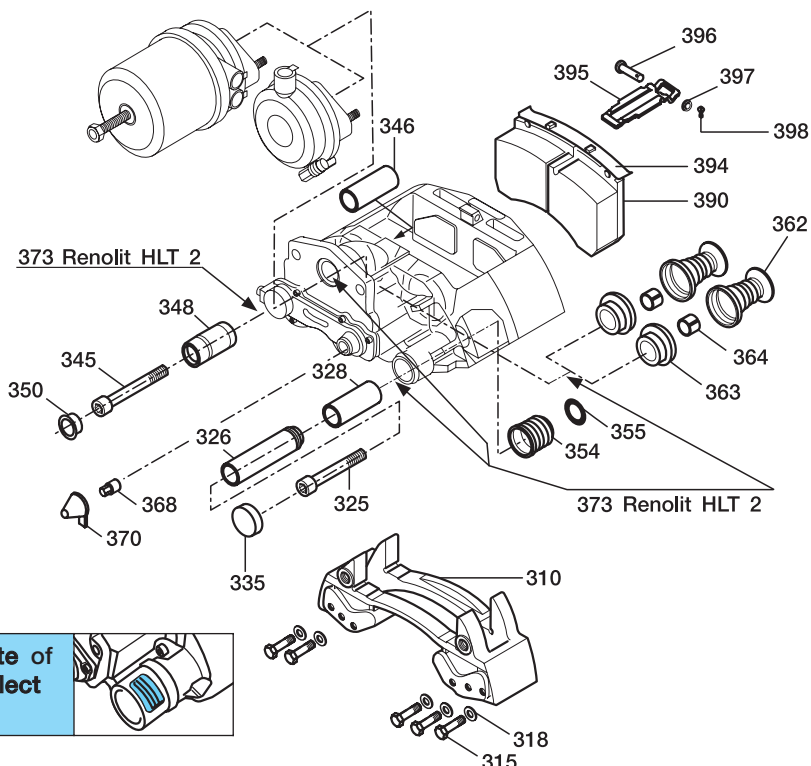
Space for notes:

11 Brake parts - SB 3745, axial screw connection, monoblock

SB 3745
SB = Disc brake
37 = Disc Ø 370 mm
45 = Disc thickness 45 mm

See pages 5 / 6 for the features of the axial screw connection and the conventional brake!

You need the information on the type plate of your disc brake in order to be able to select the correct repair kits and/or spare parts!



SB 3745, axial screw connection, monoblock construction

Item	Description	BPW code no.	Dimension, remark	Qty.
	Brake cpl.	05.362.70.30.0 / 31.0 05.362.70.36.0 / 37.0 05.362.70.36.1 / 37.1 05.362.70.36.2 / 37.2 05.362.70.40.0 / 41.0 05.362.70.40.1 / 41.1		
310	Brake caliper carrier	02.0313.13.00	For one axle side	1
315	Hexagon bolt (for one axle)	02.5029.87.20	M 16 x 1.5 x 60 - 10.9	10
318	Washer (for one axle)	02.5401.16.08	A 17	10
323	Repair kit - guide pin / seal parts (Item 325, 326, 328, 345, 346, 348, 350, 352, 373)	09.801.06.33.0	Contents per axle side	1
325	Cylinder cap screw	02.5015.72.15	M 16 x 1.5 x 86	1
326	Bush (guide sleeve)	02.0316.97.00	Ø 17 x 36 x 116	1
328	Guide bush	02.0315.36.00	Ø 36 / 40 x 82	1
345	Cylinder cap screw	02.5015.73.15	M 16 x 1.5 x 80	1
346	Bush	02.0314.06.00	Ø 17 / 32 x 80	1
348	Guide sleeve	02.1410.21.00	Ø stop ring = 39!	1
350	Cap	02.1827.07.00		1
352	Seal for guide pins	09.801.06.34.0		1
373	Renolit HLT 2	02.1040.40.00	5 g tube	2
352	Repair kit - seal for guide pins (Item 335, 354, 355)	09.801.06.34.0	Contents per axle side	1
335	Cap	02.0601.19.00		1
354	Bellows	02.1011.24.00	Ø 44 / 30 x 37.8	1

Brake parts - SB 3745, axial screw connection, monoblock

SB 3745, axial screw connection, monoblock construction				
Item	Description	BPW code no.	Dimension, remark	Qty.
355	Ring	02.5683.74.00	Ø 50 / 36.5 x 5.4	1
344	Repair kit - loose bearing	09.801.06.91.0	Contents per axle side	1
	(Item 345, 346, 348, 350, 373)			
345	Cylinder cap screw	02.5015.73.15	M 16 x 1.5 x 80	1
346	Bush	02.0314.06.00	Ø 17 / 32 x 80	1
348	Guide sleeve	02.1410.21.00	Ø stop ring = 39!	1
350	Cap	02.1827.07.00		1
373	Renolit HLT 2	02.1040.40.00	5 g tube	1
360	Repair kit - tappet parts with bellows	09.801.06.32.0	Contents per axle side	1
	(Item 362, 363, 364, 373)			
362	Thrust piece with bellows	02.0608.15.00		2
363	Seal	02.0611.05.00 ¹⁾	See remark!	2
364	Bush	02.0315.56.00	Ø 16 / 18 x 10	2
373	Renolit HLT 2	02.1040.40.00	5 g tube	1
367	Repair kit - adjuster Adapter (interchangeable adapter)	09.801.06.25.0	Contents per axle side	1
	(Item 368, 370)			
368	Adjuster adapter	02.2400.11.00		1
370	Cap	02.1827.08.00	Ø 38	1
370	Cap	02.1827.09.00	Ø 35	1
388	Repair kit - brake lining, Textar T 3030 brake lining	09.801.06.43.0	Only available as complete kit!	1
	(Item 368, 369, 370, 390, 394, 396, 397, 398)		Contents for one axle	
368	Adjuster adapter	02.2400.11.00		2
369	Cap	02.1827.04.00		2
370	Cap	02.1827.08.00	Ø 38	2
370	Cap	02.1827.09.00	Ø 35	2
390	Pad	05.092.90.05.0		4
394	Clamping spring for brake lining	02.3319.01.00		4
396	Bolt	02.5829.22.31	Ø 10 x 48 / 52	2
397	Washer	02.5404.10.04	10.5 / DIN 433	2
398	Lock	02.3301.31.00		2
393	Repair kit - lining retention clip	09.801.02.76.0	Contents for one axle	1
	(Item 395, 396, 397, 398)			
395	Brake pad retention clip	02.0305.22.00		2
396	Bolt	02.5829.22.31	Ø 10 x 48 / 52	2
397	Washer	02.5404.10.04	10.5 / DIN 433	2
398	Lock	02.3301.31.00		2

1) If the disc brake is equipped with a black "inside seal" (item 363) then do not fit the set with the white "inside seal" under any circumstances!

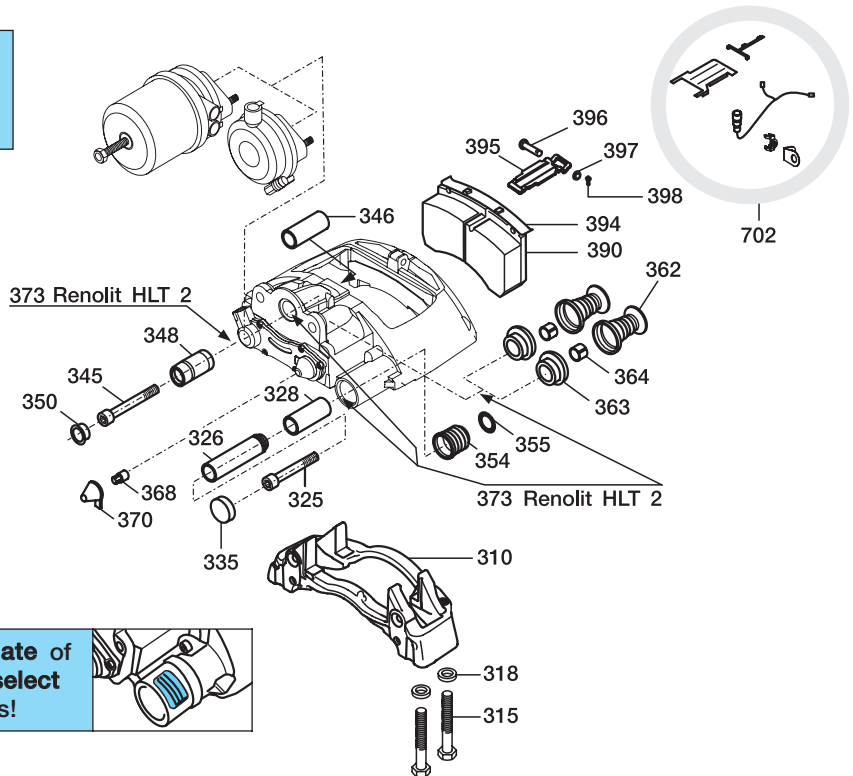
 Only use guide sleeve 02.1410.21.00 (stop ring diameter = 39!) for monoblock designs.

12 Brake parts - SB 3745, tangential screw connection, monoblock

SB 3745
SB = Disc brake
37 = Disc Ø 370 mm
45 = Disc thickness 45 mm

See pages 5 / 6 for the features of the axial screw connection and the conventional brake!

You need the information on the type plate of your disc brake in order to be able to select the correct repair kits and/or spare parts!



SB 3745, tangential screw connection, monoblock construction

Item	Description	BPW code no.	Dimension, remark	Qty.
	Brake cpl.	05.362.70.60.0 / 61.0 05.362.70.60.2 / 61.2 05.362.70.60.3 / 61.3 05.362.70.66.0 / 67.0	Only for initial equipment See remark page 15 With wear sensing	
310	Brake caliper carrier	03.303.88.55.0	For one axle side	1
315	Hexagon bolt (for one axle)	03.340.12.26.0	M 16 x 1.5 x 97 - 12.9	8
318	Washer (for one axle)	02.5401.16.08	A 17	8
323	Repair kit - guide pin / seal parts (Item 325, 326, 328, 345, 346, 348, 350, 352, 373)	09.801.06.33.0	Contents per axle side	1
325	Cylinder cap screw	02.5015.72.15	M 16 x 1.5 x 86	1
326	Bush (guide sleeve)	02.0316.97.00	Ø 17 x 36 x 116	1
328	Guide bush	02.0315.36.00	Ø 36 / 40 x 82	1
345	Cylinder cap screw	02.5015.73.15	M 16 x 1.5 x 80	1
346	Bush	02.0314.06.00	Ø 17 / 32 x 80	1
348	Guide sleeve	02.1410.21.00	Ø stop ring = 39!	1
350	Cap	02.1827.07.00		1
352	Seal for guide pins	09.801.06.34.0		1
373	Renolit HLT 2	02.1040.40.00	5 g tube	2
352	Repair kit - seal for guide pins (Item 335, 354, 355)	09.801.06.34.0	Contents per axle side	1
335	Cap	02.0601.19.00		1
354	Bellows	02.1011.24.00	Ø 44 / 30 x 37.8	1
355	Ring	02.5683.74.00	Ø 50 / 36.5 x 5.4	1

Brake parts - SB 3745, tangential screw connection, monoblock

12

SB 3745, tangential screw connection, monoblock construction				
Item	Description	BPW code no.	Dimension, remark	Qty.
344	Repair kit - loose bearing (Item 345, 346, 348, 350, 373)	09.801.06.91.0	Contents per axle side	1
345	Cylinder cap screw	02.5015.73.15	M 16 x 1.5 x 80	1
346	Bush	02.0314.06.00	Ø 17 / 32 x 80	1
348	Guide sleeve	02.1410.21.00	Ø stop ring = 39!	1
350	Cap	02.1827.07.00		1
373	Renolit HLT 2	02.1040.40.00	5 g tube	1
360	Repair kit - tappet parts with bellows (Item 362, 363, 364, 373)	09.801.06.32.0	Contents per axle side	1
362	Thrust piece with bellows	02.0608.15.00		2
363	Seal	02.0611.05.00 ¹⁾	See remark!	2
364	Bush	02.0315.56.00	Ø 16 / 18 x 10	2
373	Renolit HLT 2	02.1040.40.00	5 g tube	1
367	Repair kit - adjuster adapter (interchangeable adapter) (Item 368, 370)	09.801.06.25.0	Contents per axle side	1
368	Adjuster adapter	02.2400.11.00		1
370	Cap	02.1827.08.00	Ø 38	1
370	Cap	02.1827.09.00	Ø 35	1
388	Repair kit - brake pads - pad Textar T 3030 (Item 368, 369, 370, 390, 394, 396, 397, 398)	09.801.06.43.0	Only available as complete kit! Contents for one axle	1
368	Adjuster adapter	02.2400.11.00		2
369	Cap	02.1827.04.00		2
370	Cap	02.1827.08.00	Ø 38	2
370	Cap	02.1827.09.00	Ø 35	2
390	Pad	05.092.90.05.0		4
394	Clamping spring for brake lining	02.3319.01.00		4
396	Bolt	02.5829.22.31	Ø 10 x 48 / 52	2
397	Washer	02.5404.10.04	10.5 / DIN 433	2
398	Lock	02.3301.31.00		2
393	Repair kit - lining retention clip (Item 395, 396, 397, 398)	09.801.02.76.0	Contents for one axle	1
395	Brake pad retention clip	02.0305.22.00		2
396	Bolt	02.5829.22.31	Ø 10 x 48 / 52	2
397	Washer	02.5404.10.04	10.5 / DIN 433	2
398	Lock	02.3301.31.00		2
702	Complete wear sensor kit	05.801.51.70.0	Contents for one axle	1
-	Support	03.189.15.03.0		2
-	Support for ABS connector	02.1421.11.00		2
-	Wear sensor kit	05.801.51.74.0		1
-	(Wear indicator cable, cable duct, protective plate)			

¹⁾ If the disc brake is equipped with a black "inside seal" (item 363) then do not fit the set with the white "inside seal" under any circumstances!

 Only use guide sleeve 02.1410.21.00 (stop ring diameter = 39!) for monoblock designs.

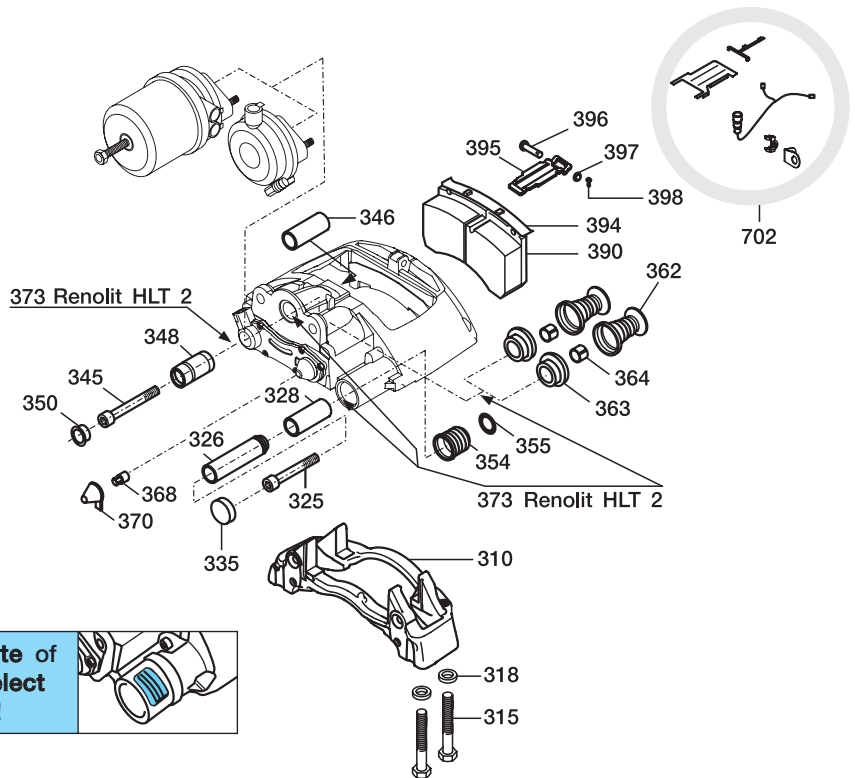
Brake caliper versions 05.362.70.60.2 / 61.2 (7 mm backing plate) are only available as initial equipment. If you need to **renew** them, order versions **05.362.70.61.3 / 05.362.70.60.3 (9 mm backing plate)**!

13 Brake parts - SB 4309, tangential screw connection, monoblock

SB 4309
SB = Disc brake
43 = Disc Ø 430 mm
09 = Standard axle load 9 t

See pages 5 / 6 for the features of the axial screw connection and the conventional brake!

You need the information on the type plate of your disc brake in order to be able to select the correct repair kits and/or spare parts!



SB 4309, tangential screw connection, monoblock construction


Item	Description	BPW code no.	Dimension, remark	Qty.
	Brake cpl.	05.362.70.62.0 / 63.0 05.362.70.62.1 / 63.1 05.362.70.70.0 / 71.0 05.362.70.70.1 / 71.1	With wear sensing	
310	Brake caliper carrier	03.303.88.56.0	For one axle side	1
315	Hexagon bolt (for one axle)	03.340.12.26.0	M 16 x 1.5 x 97 - 12.9	8
318	Washer (for one axle)	02.5401.16.08	A 17	8
323	Repair kit - guide pin / seal parts (Item 325, 326, 328, 345, 346, 348, 350, 352, 373)	09.801.06.33.0	Contents per axle side	1
325	Cylinder cap screw	02.5015.72.15	M 16 x 1.5 x 86	1
326	Bush (guide sleeve)	02.0316.97.00	Ø 17 x 36 x 116	1
328	Guide bush	02.0315.36.00	Ø 36 / 40 x 82	1
345	Cylinder cap screw	02.5015.73.15	M 16 x 1.5 x 80	1
346	Bush	02.0314.06.00	Ø 17 / 32 x 80	1
348	Guide sleeve	02.1410.21.00	Ø stop ring = 39!	1
350	Cap	02.1827.07.00		1
352	Seal for guide pins	09.801.06.34.0		1
373	Renolit HLT 2	02.1040.40.00	5 g tube	2
352	Repair kit - seal for guide pins (Item 335, 354, 355)	09.801.06.34.0	Contents per axle side	1
335	Cap	02.0601.19.00		1
354	Bellows	02.1011.24.00	Ø 44 / 30 x 37.8	1
355	Ring	02.5683.74.00	Ø 50 / 36.5 x 5.4	1

Brake parts - SB 4309, tangential screw connection, monoblock

13

SB 4309, tangential screw connection, monoblock construction				
Item	Description	BPW code no.	Dimension, remark	Qty.
344	Repair kit - loose bearing (Item 345, 346, 348, 350, 373)	09.801.06.91.0	Contents per axle side	1
345	Cylinder cap screw	02.5015.73.15	M 16 x 1.5 x 80	1
346	Bush	02.0314.06.00	Ø 17 / 32 x 80	1
348	Guide sleeve	02.1410.21.00	Ø stop ring = 39!	1
350	Cap	02.1827.07.00		1
373	Renolit HLT 2	02.1040.40.00	5 g tube	1
360	Repair kit - tappet parts with bellows (Item 362, 363, 364, 373)	09.801.06.32.0	Contents per axle side	1
362	Thrust piece with bellows	02.0608.15.00		2
363	Seal	02.0611.05.00 ¹⁾	See remark!	2
364	Bush	02.0315.56.00	Ø 16 / 18 x 10	2
373	Renolit HLT 2	02.1040.40.00	5 g tube	1
367	Repair kit - adjuster Adapter (interchangeable adapter) (Item 368, 370)	09.801.06.25.0	Contents per axle side	1
368	Adjuster adapter	02.2400.11.00		1
370	Cap	02.1827.08.00	Ø 38	1
370	Cap	02.1827.09.00	Ø 35	1
388	Repair kit - brake pads - pad Textar T 3030 (Item 368, 369, 370, 390, 394, 396, 397, 398)	09.801.06.44.0	Only available as complete kit! Contents for one axle	1
368	Adjuster adapter	02.2400.11.00	Contents for one axle	2
370	Cap	02.1827.09.00	Ø 35	2
390	Pad	05.092.90.06.0		4
394	Clamping spring for brake lining	02.3319.01.00		4
396	Bolt	02.5829.22.31	Ø 10 x 48 / 52	2
397	Washer	02.5404.10.04	10.5 / DIN 433	2
398	Lock	02.3301.31.00		2
388	Repair kit - brake pads - pad Jurid 539 (Content as for above repair kit, only with modified Item 390 = 05.092.90.08.0)	09.801.06.95.0	Only available as complete kit! Contents for one axle	1
393	Repair kit - lining retention clip (Item 395, 396, 397, 398)	09.801.02.76.0	Contents for one axle	1
395	Brake pad retention clip	02.0305.22.00		2
396	Bolt	02.5829.22.31	Ø 10 x 48 / 52	2
397	Washer	02.5404.10.04	10.5 / DIN 433	2
398	Lock	02.3301.31.00		2
702	Complete wear sensor kit	05.801.51.70.0	Contents for one axle	1
-	Support	03.189.15.03.0		2
-	Support for ABS connector	02.1421.11.00		2
-	Wear sensor kit	05.801.51.74.0		1
-	(Wear indicator cable, cable duct, protective plate)			

¹⁾ If the disc brake is equipped with a black "inside seal" (item 363) then do not fit the set with the white "inside seal" under any circumstances!

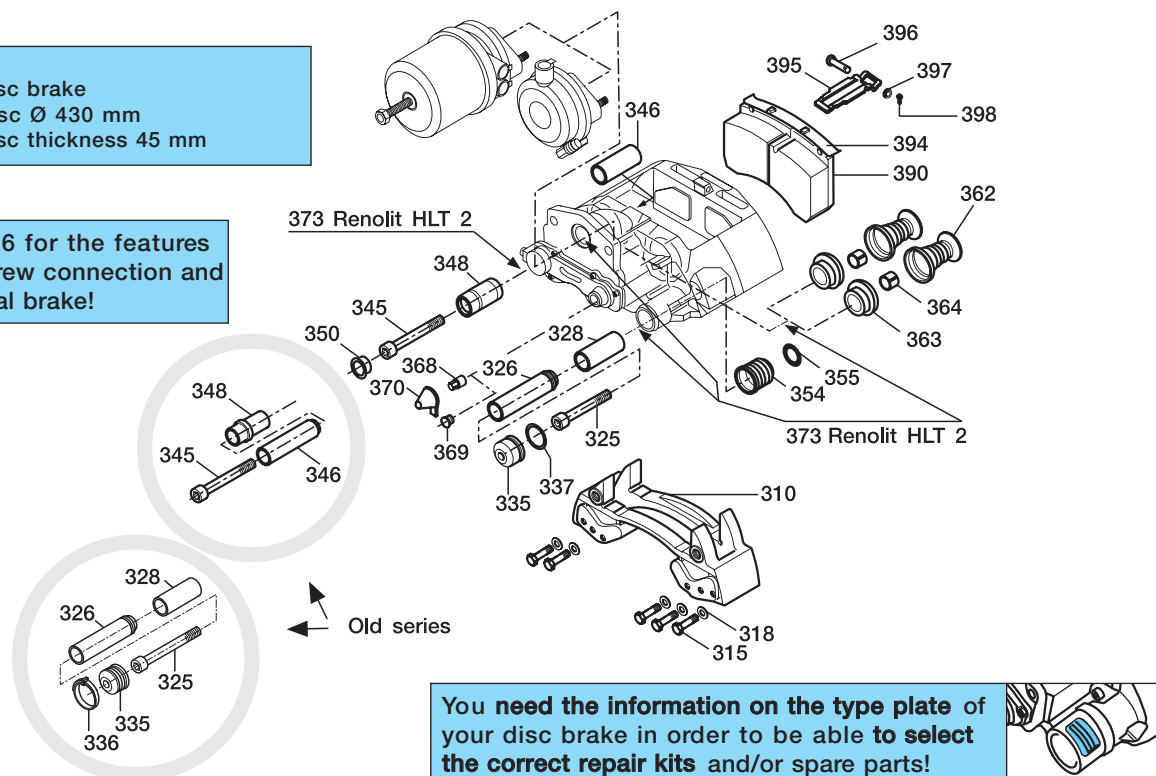
 The SB 4309 disc brake was introduced directly with a tangential screw connection and monoblock design. There are no old series!

Only use guide sleeve 02.1410.21.00 (stop ring diameter = 39!) for monoblock designs.

14 Brake parts - SB 4345, axial screw connection, conventional brake

SB 4345
SB = Disc brake
43 = Disc Ø 430 mm
45 = Disc thickness 45 mm

See pages 5 / 6 for the features of the axial screw connection and the conventional brake!



You need the information on the type plate of your disc brake in order to be able to select the correct repair kits and/or spare parts!

SB 4345, axial screw connection, conventional brake

Item	Description	BPW code no.	Dimension, remark	Qty.
	Brake cpl.	05.362.70.12.0 / 13.0 05.362.70.24.0 / 25.0		
310	Brake caliper carrier	02.0313.12.00	For one axle side	1
315	Hexagon bolt (for one axle)	02.5030.03.21	M 18 x 1.5 x 60 - 12.9	10
318	Washer (for one axle)	02.5401.19.09	A 19	10
323	Repair kit - guide pin / seal parts	09.801.06.31.0	Contents per axle side	1
	(Item 325, 326, 328, 345, 346, 348, 350, 352, 373)			
325	Cylinder cap screw	02.5015.72.15	M 16 x 1.5 x 86	1
326	Bush (guide sleeve)	02.0316.97.00	Ø 17 x 36 x 116	1
328	Guide bush	02.0315.36.00	Ø 36 / 40 x 82	1
345	Cylinder cap screw	02.5015.73.15	M 16 x 1.5 x 80	1
346	Bush	02.0314.06.00	Ø 17 / 32 x 80	1
348	Guide sleeve	02.1410.22.00	Ø stop ring = 35!	1
350	Cap	02.1827.07.00		1
352	Repair kit	09.801.06.11.0		1
373	Renolit HLT 2	02.1040.40.00	5 g tube	2
352	Repair kit - seal for guide pins	09.801.06.11.0	Contents per axle side	1
	(Item 335, 337, 354, 355, 369)			
335	Cap (steel cap)	02.1827.06.00		1
337	O-ring	02.5677.98.00	Ø 47 x 2.6	1
354	Bellows	02.1011.24.00	Ø 44 / 30 x 37.8	1
355	Ring	02.5683.74.00	Ø 50 / 36.5 x 5.4	1
369	Cap	02.1827.04.00		1

Brake parts - SB 4345, axial screw connection, conventional brake

SB 4345, axial screw connection, conventional brake

Item	Description	BPW code no.	Dimension, remark	Qty.
344	Repair kit - loose bearing, (Item 345, 346, 348, 350, 373)	09.801.06.90.0	Contents per axle side	1
345	Cylinder cap screw	02.5015.73.15	M 16 x 1.5 x 80	1
346	Bush	02.0314.06.00	Ø 17 / 32 x 80	1
348	Guide sleeve	02.1410.22.00	Ø stop ring = 35!	1
350	Cap	02.1827.07.00		1
373	Renolit HLT 2	02.1040.40.00	5 g tube	1
333	Repair kit bellows / hose clip, (Item 335, 336)	09.801.02.58.0	Contents for one axle	1
335	Bellows	02.1011.25.00	Ø 46 x 38	2
336	Hose clip	02.3502.38.00		2
352	Repair kit - seal for guide pins (Item 335, 336, 354, 355, 369)	09.801.02.60.0	Contents per axle side	1
335	Bellows	02.1011.25.00	Ø 46 x 38	1
336	Hose clip	02.3502.38.00		1
354	Bellows	02.1011.24.00	Ø 44 / 30 x 37.8	1
355	Ring	02.5683.74.00	Ø 36.6 / 50 x 5.4	1
369	Cap	02.1827.04.00		1
360	Repair kit - tappet parts with bellows, (Item 362, 363, 364, 373)	09.801.02.63.0	Contents per axle side	1
362	Thrust piece with bellows	02.0608.14.00		2
363	Seal	02.0611.06.00 ¹⁾	See remark!	2
364	Bush	02.0315.56.00	Ø 16 / 18 x 10	2
373	Renolit HLT 2	02.1040.40.00	5 g tube	1
367	Repair kit - adjuster Adapter (interchangeable adapter) (Item 368, 370)	09.801.06.25.0	Contents per axle side	1
368	Adjuster adapter	02.2400.11.00		1
370	Cap	02.1827.08.00	Ø 38	1
370	Cap	02.1827.09.00	Ø 35	1
388	Repair kit - brake pads - pad Textar T 3030 (Item 368, 369, 370, 390, 394, 396, 397, 398)	09.801.06.45.0	Only available as complete kit! Contents for one axle	1
368	Adjuster adapter	02.2400.11.00		2
369	Cap	02.1827.04.00		2
370	Cap	02.1827.08.00	Ø 38	2
370	Cap	02.1827.09.00	Ø 35	2
390	Pad	05.092.90.07.0		4
394	Clamping spring for brake lining	02.3319.01.00		4
396	Bolt	02.5829.22.31	Ø 10 x 48 / 52	2
397	Washer	02.5404.10.04	10.5 / DIN 433	2
398	Lock	02.3301.31.00		2
388	Repair kit - brake pads - pad Jurid 539 (Content as for above repair kit, only with modified Item 390 = 05.092.90.09.0)	09.801.06.96.0	Only available as complete kit! Contents for one axle	1
393	Repair kit - lining retention clip (Item 395, 396, 397, 398)	09.801.02.66.0	Contents for one axle	1
395	Brake pad retention clip	02.0305.21.00		2
396	Bolt	02.5829.22.31	Ø 10 x 48 / 52	2
397	Washer	02.5404.10.04	10.5 / DIN 433	2
398	Lock	02.3301.31.00		2

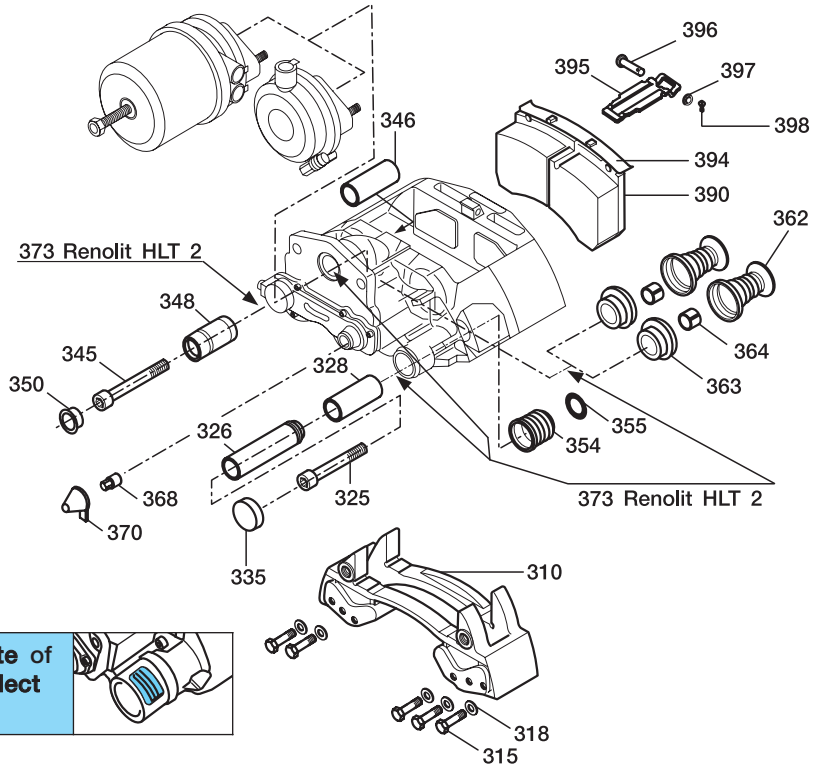
¹⁾ If the disc brake is equipped with a black "inside seal" (item 363) then do not fit the set with the white "inside seal" under any circumstances!

15 Brake parts - SB 4345, axial screw connection, monoblock

SB 4345
SB = Disc brake
43 = Disc Ø 430 mm
45 = Disk thickness 45 mm

See pages 5 / 6 for the features of the axial screw connection and the conventional brake!

You need the information on the type plate of your disc brake in order to be able to select the correct repair kits and/or spare parts!



SB 4345, axial screw connection, monoblock construction

Item	Description	BPW code no.	Dimension, remark	Qty.
	Brake cpl.	05.362.70.32.0 / 33.0 05.362.70.34.0 / 35.0 05.362.70.38.0 / 39.0 05.362.70.38.1 / 39.1 05.362.70.38.2 / 39.2 05.362.70.42.0 / 43.0 05.362.70.42.1 / 43.1 05.362.70.42.2 / 43.2 05.362.70.42.3 / 43.3		
310	Brake caliper carrier	02.0313.12.00	For one axle side	1
315	Hexagon bolt (for one axle)	02.5030.03.21	M 18 x 1.5 x 60 - 12.9	10
318	Washer (for one axle)	02.5401.19.09	A 19	10
323	Repair kit - guide pin / seal parts (Item 325, 326, 328, 345, 346, 348, 350, 352, 373)	09.801.06.33.0	Contents per axle side	1
325	Cylinder cap screw	02.5015.72.15	M 16 x 1.5 x 86	1
326	Bush (guide sleeve)	02.0316.97.00	Ø 17 x 36 x 116	1
328	Guide bush	02.0315.36.00	Ø 36 / 40 x 82	1
345	Cylinder cap screw	02.5015.73.15	M 16 x 1.5 x 80	1
346	Bush	02.0314.06.00	Ø 17 / 32 x 80	1
348	Guide sleeve	02.1410.21.00	Ø stop ring = 39!	1
350	Cap	02.1827.07.00		1
352	Seal for guide pins	09.801.06.34.0		1
373	Renolit HLT 2	02.1040.40.00	5 g tube	2

Brake parts - SB 4345, axial screw connection, monoblock

SB 4345, axial screw connection, monoblock construction				
Item	Description	BPW code no.	Dimension, remark	Qty.
352	Repair kit - seal for guide pins (Item 335, 354, 355)	09.801.06.34.0	Contents per axle side	1
335	Cap	02.0601.19.00		1
354	Bellows	02.1011.24.00	Ø 44 / 30 x 37.8	1
355	Ring	02.5683.74.00	Ø 50 / 36.5 x 5.4	1
344	Repair kit - loose bearing (Item 345, 346, 348, 350, 373)	09.801.06.91.0	Contents per axle side	1
345	Cylinder cap screw	02.5015.73.15	M 16 x 1,5 x 80	1
346	Bush	02.0314.06.00	Ø 17 / 32 x 80	1
348	Guide sleeve	02.1410.21.00	Ø stop ring = 39!	1
350	Cap	02.1827.07.00		1
373	Renolit HLT 2	02.1040.40.00	5 g tube	1
360	Repair kit - tappet parts with bellows (Item 362, 363, 364, 373)	09.801.06.32.0	Contents per axle side	1
362	Thrust piece with bellows	02.0608.15.00		2
363	Seal	02.0611.05.00 ¹⁾	See remark!	2
364	Bush	02.0315.56.00	Ø 16 / 18 x 10	2
373	Renolit HLT 2	02.1040.40.00	5 g tube	1
367	Repair kit - adjuster Adapter (interchangeable adapter) (Item 368, 370)	09.801.06.25.0	Contents per axle side	1
368	Adjuster adapter	02.2400.11.00		1
370	Cap	02.1827.08.00	Ø 38	1
370	Cap	02.1827.09.00	Ø 35	1
388	Repair kit - brake pads - pad Textar T 3030 (Item 368, 369, 370, 390, 394, 396, 397, 398)	09.801.06.45.0	Only available as complete kit! Contents for one axle	1
368	Adjuster adapter	02.2400.11.00		2
369	Cap	02.1827.04.00		2
370	Cap	02.1827.08.00	Ø 38	2
370	Cap	02.1827.09.00	Ø 35	2
390	Pad	05.092.90.07.0		4
394	Clamping spring for brake lining	02.3319.01.00		4
396	Bolt	02.5829.22.31	Ø 10 x 48 / 52	2
397	Washer	02.5404.10.04	10.5 / DIN 433	2
398	Lock	02.3301.31.00		2
388	Repair kit - brake pads - pad Jurid 539 (Content as for above repair kit, only with modified Item 390 = 05.092.90.09.0)	09.801.06.96.0	Only available as complete kit! Contents for one axle	1
393	Repair kit - lining retention clip (Item 395, 396, 397, 398)	09.801.02.66.0	Contents for one axle	1
395	Brake pad retention clip	02.0305.21.00		2
396	Bolt	02.5829.22.31	Ø 10 x 48 / 52	2
397	Washer	02.5404.10.04	10.5 / DIN 433	2
398	Lock	02.3301.31.00		2

1) If the disc brake is equipped with a black "inside seal" (item 363) then do not fit the set with the white "inside seal" under any circumstances!

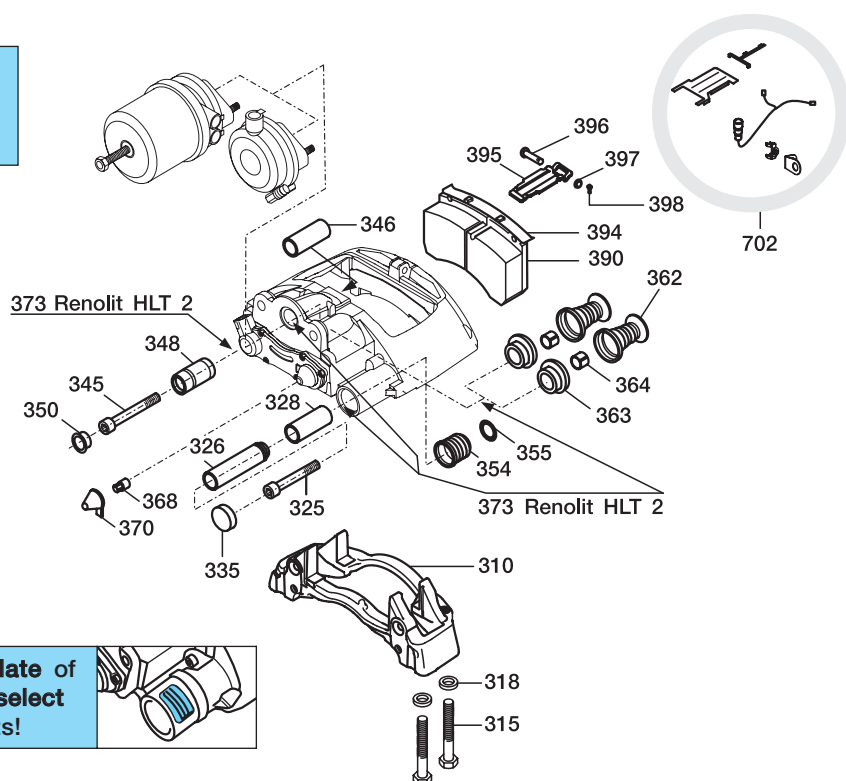
 Only use guide sleeve 02.1410.21.00 (stop ring diameter = 39!) for monoblock designs.

16 Brake parts - SB 4345, tangential screw connection, monoblock

SB 4345
SB = Disc brake
43 = Disc Ø 430 mm
45 = Disc thickness 45 mm

See pages 5 / 6 for the features of the axial screw connection and the conventional brake!

You need the information on the type plate of your disc brake in order to be able to select the correct repair kits and/or spare parts!



SB 4345, tangential screw connection, monoblock construction

Item	Description	BPW code no.	Dimension, remark	Qty.
	Brake cpl.	05.362.70.64.0 / 65.0 05.362.70.64.2 / 65.2 05.362.70.64.3 / 65.3 05.362.70.68.0 / 69.0 05.362.70.68.1 / 69.1	With wear sensing With wear sensing	
310	Brake caliper carrier	03.303.88.57.0	For one axle side	1
315	Hexagon bolt (for one axle)	03.340.12.26.0	M 16 x 1.5 x 97 - 12.9	8
318	Washer (for one axle)	02.5401.16.08	A 17	8
323	Repair kit - guide pin / seal parts	09.801.06.33.0	Contents per axle side	1
	(Item 325, 326, 328, 345, 346, 348, 350, 352, 373)			
325	Cylinder cap screw	02.5015.72.15	M 16 x 1.5 x 86	1
326	Bush (guide sleeve)	02.0316.97.00	Ø 17 x 36 x 116	1
328	Guide bush	02.0315.36.00	Ø 36 / 40 x 82	1
345	Cylinder cap screw	02.5015.73.15	M 16 x 1.5 x 80	1
346	Bush	02.0314.06.00	Ø 17 / 32 x 80	1
348	Guide sleeve	02.1410.21.00	Ø stop ring = 39!	1
350	Cap	02.1827.07.00		1
352	Seal for guide pins	09.801.06.34.0		1
373	Renolit HLT 2	02.1040.40.00	5 g tube	2
352	Repair kit - seal for guide pins	09.801.06.34.0	Contents per axle side	1
	(Item 335, 354, 355)			
335	Cap	02.0601.19.00		1
354	Bellows	02.1011.24.00	Ø 44 / 30 x 37.8	1

Brake parts - SB 4345, tangential screw connection, monoblock 16

SB 4345, tangential screw connection, monoblock construction				
Item	Description	BPW code no.	Dimension, remark	Qty.
355	Ring	02.5683.74.00	Ø 50 / 36.5 x 5.4	1
344	Repair kit - loose bearing	09.801.06.91.0	Contents per axle side	1
	(Item 345, 346, 348, 350, 373)			
345	Cylinder cap screw	02.5015.73.15	M 16 x 1.5 x 80	1
346	Bush	02.0314.06.00	Ø 17 / 32 x 80	1
348	Guide sleeve	02.1410.21.00	Ø stop ring = 39!	1
350	Cap	02.1827.07.00		1
373	Renolit HLT 2	02.1040.40.00	5 g tube	1
360	Repair kit - tappet parts with bellows	09.801.06.32.0	Contents per axle side	1
	(Item 362, 363, 364, 373)			
362	Thrust piece with bellows	02.0608.15.00		2
363	Seal	02.0611.05.00 ¹⁾	See remark!	2
364	Bush	02.0315.56.00	Ø 16 / 18 x 10	2
373	Renolit HLT 2	02.1040.40.00	5 g tube	1
367	Repair kit - adjuster Adapter (interchangeable adapter)	09.801.06.25.0	Contents per axle side	1
	(Item 368, 370)			
368	Adjuster adapter	02.2400.11.00		1
370	Cap	02.1827.08.00	Ø 38	1
370	Cap	02.1827.09.00	Ø 35	1
388	Repair kit - brake pads - pad Textar T 3030	09.801.06.45.0	Only available as complete kit!	1
	(Item 368, 369, 370, 390, 394 ,396, 397, 398)		Contents for one axle	
368	Adjuster adapter	02.2400.11.00		2
369	Cap	02.1827.04.00		2
370	Cap	02.1827.08.00	Ø 38	2
370	Cap	02.1827.09.00	Ø 35	2
390	Pad	05.092.90.07.0		4
394	Clamping spring for brake lining	02.3319.01.00		4
396	Bolt	02.5829.22.31	Ø 10 x 48 / 52	2
397	Washer	02.5404.10.04	10.5 / DIN 433	2
398	Lock	02.3301.31.00		2
388	Repair kit - brake pads - pad Jurid 539	09.801.06.96.0	Only available as complete kit!	1
	(Content as for above repair kit, only with modified		Contents for one axle	
	Item 390 = 05.092.90.09.0)			
393	Repair kit - lining retaining clip	09.801.02.66.0	Contents for one axle	1
	(Item 395, 396, 397, 398)			
395	Brake pad retention clip	02.0305.21.00		2
396	Bolt	02.5829.22.31	Ø 10 x 48 / 52	2
397	Washer	02.5404.10.04	10.5 / DIN 433	2
398	Lock	02.3301.31.00		2
702	Complete wear sensor kit	05.801.51.70.0	Contents for one axle	1
-	Support	03.189.15.03.0		2
-	Support for ABS connector	02.1421.11.00		2
-	Wear sensor kit	05.801.51.74.0		1
-	(Wear indicator cable, cable duct, protective plate)			

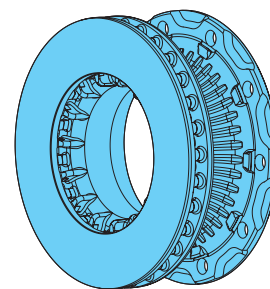
¹⁾ If the disc brake is equipped with a black "inside seal" (item 363) then do not fit the set with the white "inside seal" under any circumstances!

 Only use guide sleeve 02.1410.21.00 (stop ring diameter = 39!) for monoblock designs.

17 Brake discs

The latest generation of BPW brake discs offers the following advantages:

- Increased surface area for effective heat dissipation
- Optimisation of material for improved heat distribution over the surface of the disc
- Venturi contour for improved internal air flow
- Optimally matched friction pairing (pads/brake disc)
- High resistance to wear
- Simplified spare parts provision thanks to uniform brake discs for 0 and 120 offsets

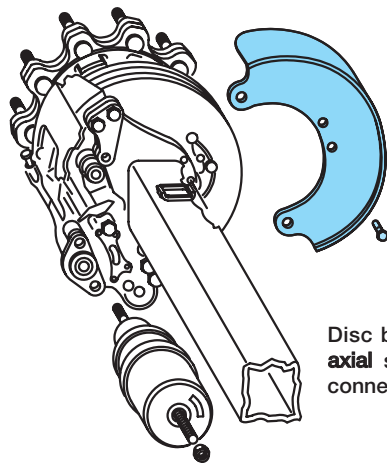


BPW brake disc in IBD version

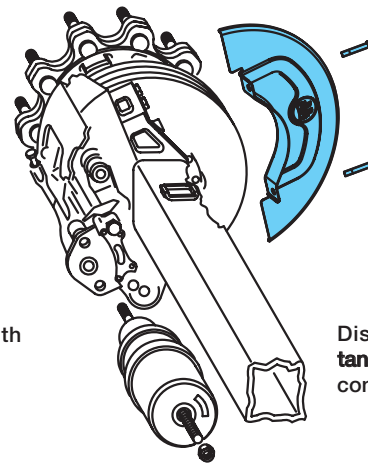
Brake	BPW code no.	Pitch circle / hole pattern	Wheel hub	Series	Remark	Qty. / axle
SB 3745	03.088.34.01.7	275 / 8-hole	S-hub			2
	03.088.34.03.7	275 / 8-hole	S-hub		With mounting for ABS pole wheel	2
	03.088.34.04.7	335 / 10-hole	S-hub		With mounting for ABS pole wheel	2
	03.088.34.06.7	335 / 10-hole	S-hub			2
	03.088.34.08.7	335 / 10-hole	B-hub			2
	03.088.34.10.7	335 / 10-hole	S + B-hub	IBD (from 05/2003)		2
	03.088.34.13.7	335 / 10-hole	S-hub	IBD (from 05/2003)	With mounting for ABS pole wheel	2
SB 4309	03.088.35.05.7	335 / 10-hole	S + B-hub	IBD (from 05/2003)		2
SB 4345	03.088.35.01.7				With mounting for ABS pole wheel	2
	03.088.35.05.7	335 / 10-hole	S-hub	IBD (from 05/2003)	.. 05.7 replaces .. 03.7	2



Centering between the brake disc and wheel hub in IBD versions is achieved exclusively by multiturn studs!
For more information about brake discs, please refer to the BPW website at www.bpw.de (latest News/BPW NEWS).



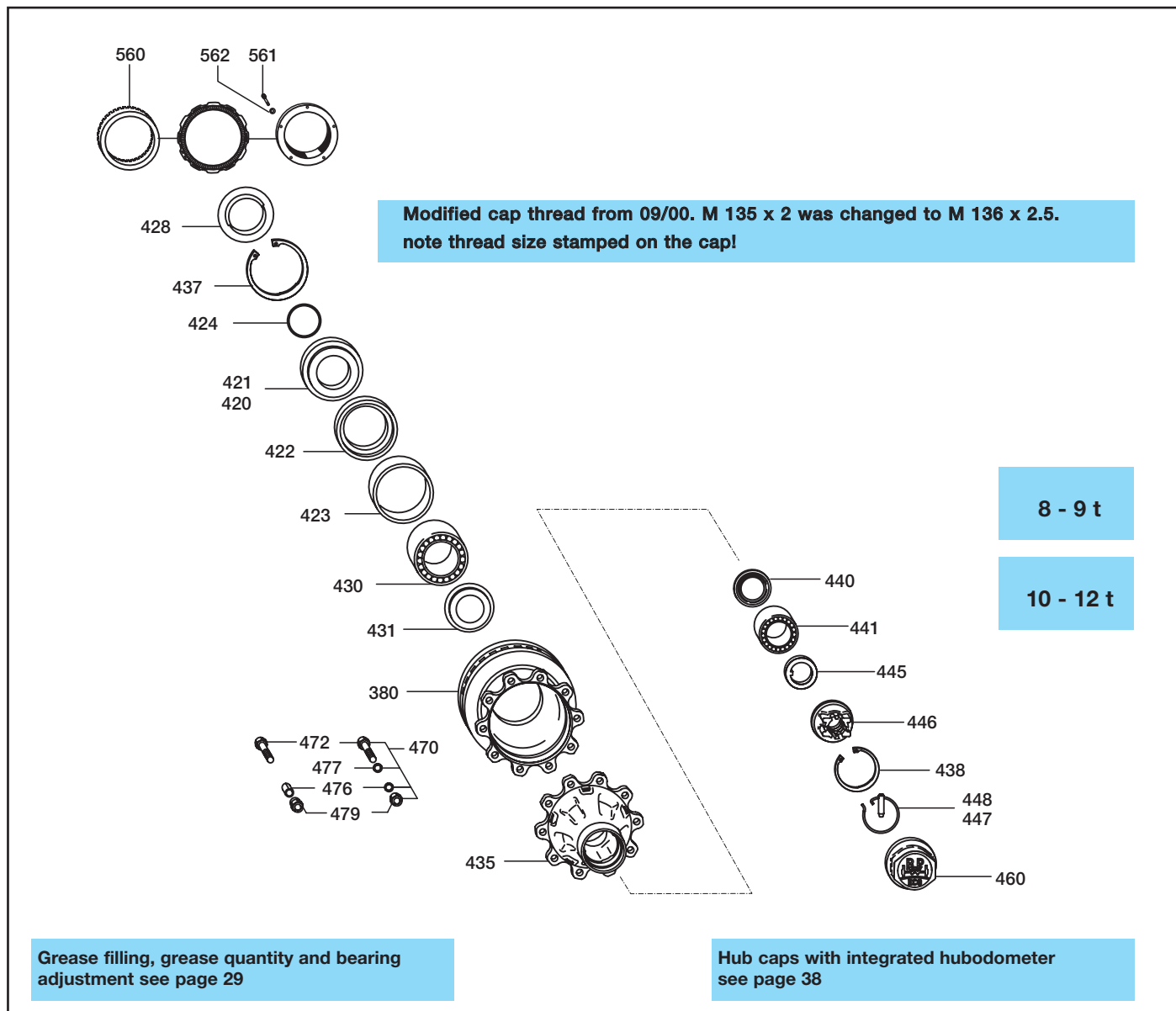
Disc brake with axial screw connection



Disc brake with tangential screw connection

Brake	Series	ET	Retrofit kit	Components	Designation	Dimension	Qty. / axle	Remark	
SB 3745, axial screw connection ---.610.---	SKH..	0 / 120	09.801.06.16.0	03.010.91.53.0	Disc protector		2	Retrofit for 120 offset only after date of manufacture 3/2001	
				02.5071.22.00	Hexagon bolt	M 10 x 15	2		
	SKH..LL	0	09.801.06.19.0	03.010.91.58.0	Disc protector		1		In the case of zero offset, tapped holes are required in the steering housing as shown in drawing 04.00.500367
				02.5071.22.00	Hexagon bolt	M 10 x 15	6		
SB 3745, tangential screw connection ---.612.---	SKH.. SKH..LL (9 t)	0	09.801.06.38.0	03.010.91.74.0	Disc protector		2	Square axle beam 120	
				02.5071.22.00	Hexagon bolt	M 10 x 15	4		
	SKH.. (10 t)	0	09.801.06.49.0	03.010.91.79.0	Disc protector		1		
				03.010.91.80.0	Disc protector		1		
	SKHB.. SKHB..LL	120	09.801.06.39.0	03.010.91.75.0	Disc protector		2		
				02.5071.22.00	Hexagon bolt	M 10 x 15	4		
SB 4309, tangential screw connection --.613.---	SH.. SH..LL	0	09.801.06.40.0	03.010.91.76.0	Disc protector		2	Square axle beam 120	
				02.5071.22.00	Hexagon bolt	M 10 x 15	4		
	SH.. SHB..LL	120	09.801.06.41.0	03.010.91.77.0	Disc protector		2		
				02.5071.22.00	Hexagon bolt	M 10 x 15	4		
SB 4345, axial screw connection ---.609.---	SH..	0	09.801.06.17.1	03.010.91.62.0	Disc protector		2	Square axle beam 120	
				02.5071.22.00	Hexagon bolt	M 10 x 15	2		
			09.801.06.18.1	03.010.91.63.0	Disc protector		2	Square axle beam 150	
				02.5071.22.00	Hexagon bolt	M 10 x 15	2		
SB 4345, tangential screw connection ---.614.---	SH.. SH..LL	0	09.801.06.40.0	03.010.91.76.0	Disc protector		2	Square axle beam 120	
				02.5071.22.00	Hexagon bolt	M 10 x 15	4		
			09.801.06.42.0	03.010.91.78.0	Disc protector		2	Square axle beam 150	
				02.5071.22.00	Hexagon bolt	M 10 x 15	4		



19 ECO wheel hubs



Item	Description / remark	SH.. / SKH.. ECO 8 - 9 t ---36 / 38.---.---		SH.. / SKH.. ECO 10 - 12 t --.40.---.---	
		BPW code no.	Dimension	BPW code no.	Dimension
380	Brake disc	see page 24		see page 24	
418	Repair kit roller bearing with axle nut and hub cap (Item 420, 428 - 431, 437 - 460)	09.801.02.33.0, for one axle side		09.801.02.34.0, for one axle side	
418	Repair kit roller bearing without axle nut and hub cap (Item 420, 423, 430, 431, 441 - 445)	09.801.02.72.0		09.801.06.89.0	
420	Thrust washer cpl. (Item 421, 422, 424)	05.370.07.67.0		05.370.07.65.0	
421	Thrust washer	03.370.07.60.0	Ø 86 / 115 / 139 x 22	03.370.07.62.0	Ø 96 / 135 / 159 x 22
422	Lip seal	02.5664.57.00	Ø 137-115-10.5	02.5664.58.00	Ø 157-135-8
423	Ring	02.5683.62.00	Ø 131 / 140 x 12	02.5683.63.00	Ø 151 / 160 x 12.5

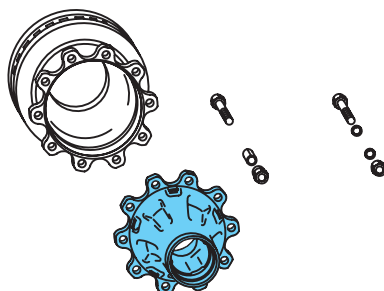
		SH.. / SKH.. ECO 8 - 9 t --.36 / 38,----,---		SH.. / SKH.. ECO 10 - 12 t --.40,----,---	
Item	Description / Remark	BPW code no.	Dimension	BPW code no.	Dimension
424	O-ring	02.5677.90.40	Ø 90 x 3	02.5678.00.00	Ø 100 x 3
428	Dirt seal	02.5681.98.00	Ø 103 / 147 x 15	03.120.48.13.0	Ø 133 / 168 x 15
430	Roller bearing	02.6410.24.00	33116	02.6410.23.00	33118
431	Disc protector	03.010.93.33.0	Ø 84 / 129 x 8.5	03.010.93.34.0	Ø 94 / 149 x 8.5
435	Hub	see page 28		see page 28	
437	Circlip	02.5606.40.90	140 x 4 / 472	02.5606.60.90	140 x 4 / 472
438	Circlip	02.5606.12.90	112 x 4 / 472	02.5606.22.90	122 x 4 / 472
440	Thrust washer	03.370.25.16.0	Ø 53 / 98 x 8	03.370.26.24.0	Ø 71 / 108 x 9.5
441	Roller bearing	02.6410.25.00	32310	02.6410.22.00	33213
445	Washer	03.320.73.13.0	Ø 43 / 61 x 5.8	03.320.64.01.0	Ø 53 / 76 x 5.8
446	Axle nut	03.266.46.02.0	M 42 x 2 / SW 65 Ø 110	05.266.47.03.0	M 52 x 2 / SW 80 Ø 120
447	Bolt	03.084.71.17.0	Ø 8 x 45	03.084.71.17.0	Ø 8 x 45
448	Locking ring	03.188.03.06.0	Ø 54 x 2	03.188.04.08.0	Ø 66 x 2
460	Hub cap (normal)	03.212.24.25.0	M 125 x 2 / SW 110	03.212.25.08.0	M 135 x 2 / SW 110
	hub cap (chrome)	03.212.24.26.0	M 125 x 2 / SW 110	03.212.25.23.0	M 135 x 2 / SW 110
				03.212.25.33.0	M 136 x 2.5 / SW 110

Grease applicators for standard tapered roller bearings 20

<ul style="list-style-type: none"> ● Exact quantities of grease without any waste ● Long service life of tapered roller bearings thanks to a clean grease fill ● Compact, enclosed design for ease of handling ● A clean workplace, no grease spillage so no additional cleaning cost 	 <p>Grease connection = Flat-type grease nipple to DIN 3404</p> 
---	--

BPW grease applicators				
BPW part number, complete set	BPW part number, individual components	Qty.	Description	Tapered roller bearing
99.00.000.9.54	16.076.22935	1	BPW grease applicators	33116
	16.072.22935	1	BPW grease applicators	32310
	15.069.22935	1	Adapter for flat-type grease nipple	--
99.00.000.9.55	16.062.22935	1	BPW grease applicators	33118
	16.068.22935	1	BPW grease applicators	33213
	15.069.22935	1	Adapter for flat-type grease nipple	--

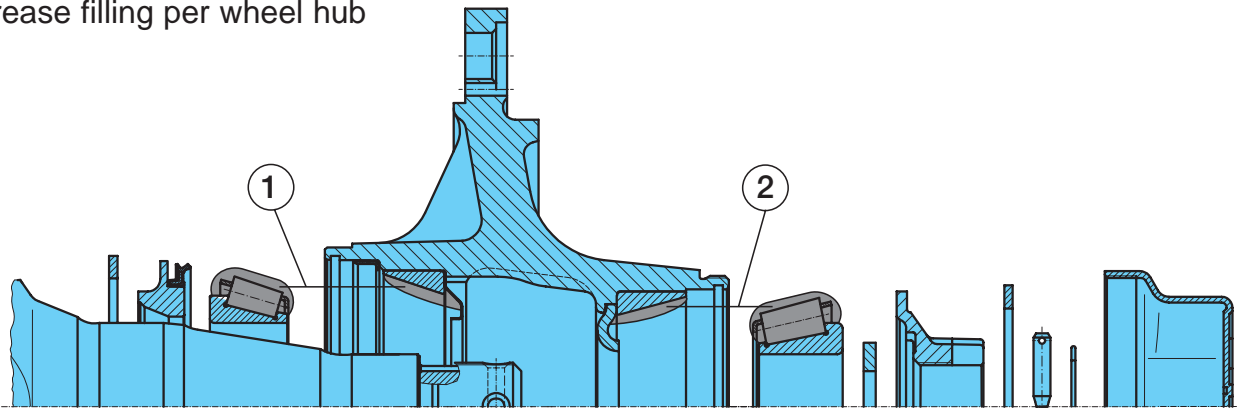
21 ECO wheel hubs



	Axle load / hub	Complete hub	Hub dimension	Remark	Qty.
SKH (SB 3745)	9 t				
	03.272.28.71.0	09.801.06.65.0	M 125 x 2 / 8 x Ø 22	SKH.. ECO MAXX, steel- and alloy wheels	2
	03.272.28.72.0 ¹⁾		M 135 x 2 / 8 x Ø 22	SKH.. ECO MAXX, steel- and alloy wheels	2
	03.272.30.97.0	09.801.06.05.0	M 125 x 2 / 10 x Ø 22	SKHS.. ECO MAXX, steel- and alloy wheels	2
	03.272.30.99.0		M 125 x 2 / 10 x Ø 22	SKHB.. ECO MAXX	2
	03.272.32.03.0	09.801.06.64.0	M 125 x 2 / 10 x Ø 22	SKH.. ECO MAXX, steel- and alloy wheels	2
	03.272.32.06.0		M 125 x 2 / 10 x Ø 22	SKHZ.. ECO MAXX, steel- and alloy wheels	2
	03.272.32.04.0 ¹⁾	09.801.06.74.0	M 135 x 2 / 10 x Ø 22	SKH.. ECO MAXX, alloy wheels	2
	10 t				
	03.272.46.20.0	Replaced by 03.272.46.24.0	M 135 x 2 / 8 x Ø 22	SKH.. ECO MAXX	2
	03.272.46.24.0	09.801.06.63.0	M 136 x 2.5 / 8 x Ø 22	SKH.. ECO MAXX	2
	03.272.43.04.0	Replaced by 03.272.43.13.0	M 135 x 2 / 10 x Ø 22	SKHZ.. ECO MAXX	2
	03.272.43.13.0	09.801.06.66.0	M 136 x 2.5 / 10 x Ø 22	SKH.. ECO MAXX	2
	03.272.43.18.0		M 136 x 2.5 / 10 x Ø 22	SKHZM..	2
SH.. (SB 4309 / SB 4345)	8 - 9 t				
	03.272.30.97.0	09.801.06.05.0	M 125 x 2 / 10 x Ø 22	SH.. ECO MAXX, steel- and alloy wheels	2
	03.272.30.98.0		M 125 x 2 / 10 x Ø 22	SHZ.. ECO MAXX, steel- and alloy wheels	2
	03.272.30.94.0		M 135 x 2 / 10 x Ø 22	SH.. ECO MAXX, steel- and alloy wheels	2
	10 - 12 t				
	03.272.48.96.0	Replaced by 03.272.43.17.0	M 135 x 2 / 10 x Ø 22	SHZ.. ECO MAXX, alloy wheels	2
	03.272.48.99.0	Replaced by 03.272.43.11.0	M 135 x 2 / 10 x Ø 22	SHS.. / SHZ.. ECO MAXX	2
	03.272.43.11.0	09.801.06.84.0	M 136 x 2.5 / 10 x Ø 22	SHS..., steel- and alloy wheels; SHZ..., steel wheels ECO MAXX	2
03.272.43.17.0	09.801.06.23.0	M 136 x 2.5 / 10 x Ø 22	SHZM.. ECO MAXX, alloy wheels	2	
SKH..LL (SB 3745)	8 - 9 t				
	03.272.30.97.0	09.801.06.05.0	M 125 x 2 / 10 x Ø 22	SKHS.. LL ECO MAXX	2
	03.272.32.04.0	09.801.06.74.0	M 135 x 2 / 10 x Ø 22	SKH.. LL ECO MAXX, alloy wheels	2
	10 t				
	03.272.46.20.0	Replaced by 03.272.46.24.0	M 135 x 2 / 8 x Ø 22	SKMZ.. LL	2
03.272.46.24.0	09.801.06.63.0	M 136 x 2.5 / 8 x Ø 22	SKMZ.. LL	2	

1) The versions are alloy wheel hubs.

Grease filling per wheel hub



The BPW ECO hub system is designed for longlife lubrication (500,000 km or 3 years under normal conditions). Thereafter clean taper roller bearings (using diesel oil) thoroughly, dried, check for re-useability and re-grease (observe maintenance instructions).

BPW longlife roller bearing grease ECO-Li 91, quantity per tapered roller bearing

Axle load	Axle type	① Inner		② Outer	
		Roller bearing	Quantity	Roller bearing	Quantity
8000 - 9000 kg	SKH.. 8 - 9 t ECO	33116	120 g	32310	120 g
10000 - 12000 kg	SH.. 10 - 12 t ECO	33118	170 g	33213	120 g

Work BPW longlife roller bearing grease ECO-Li 91 thoroughly into the spaces between the

① and ② tapered rollers and the races. Apply remainder to outer races in the hub.

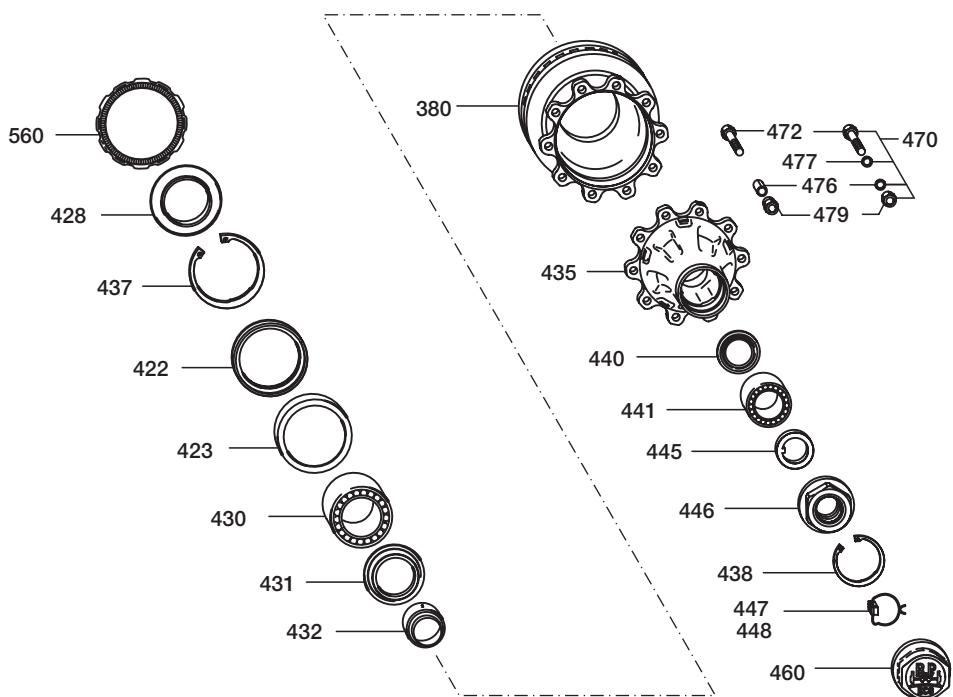
Renew the lip seal and smear contact area with BPW longlife roller bearing grease ECO-Li 91

Bearing adjustment

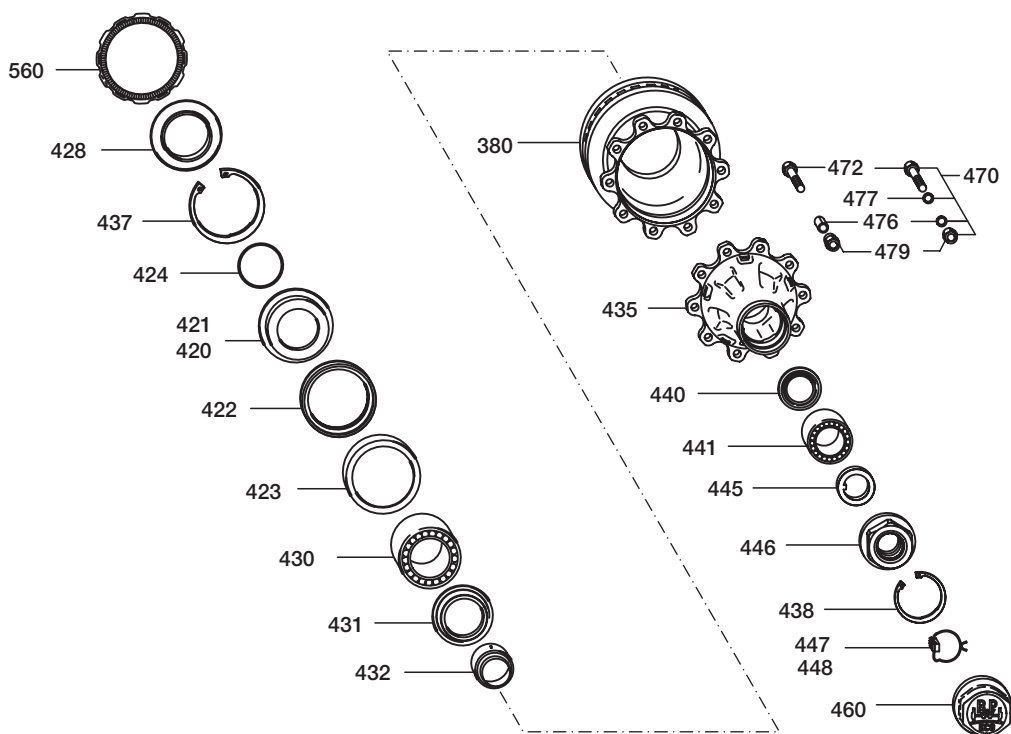
1. Unscrew the hub cap.
2. Remove the locking bolt with spring ring.
3. By turning wheel hub simultaneously, tighten axle nut with torque wrench to 150 Nm and turn back to the next possible securing hole, max. 15°. - Because of the asymmetric crown of the axle nut the next securing hole will be reached after max. 15°.
4. Re-assemble locking bolt with spring ring.
5. Grease thread of the hub cap around with ECO-Li 91, screw on hub and tighten to the prescribed tightening torque (steel hub cap 800 Nm, alloy hub cap 350 Nm)

BPW longlife roller bearing grease ECO-Li 91	Container	BPW Sachnr.
	0.4 kg Cartridge	02.1040.34.00
	2.5 kg Bucket	02.1040.30.00
	5 kg Bucket	02.1040.31.00
	10 kg Bucket	02.1040.32.00
	50 kg Drum	02.1040.33.00

23 ECO^{Plus} hub system



Modified cap thread from 09/00. M 135 x 2 was changed to M 136 x 2.5.
note thread size stamped on the cap!



Grease filling, grease quantity and bearing adjustment, see page 33

Hub caps with integrated hubodometer see page 38

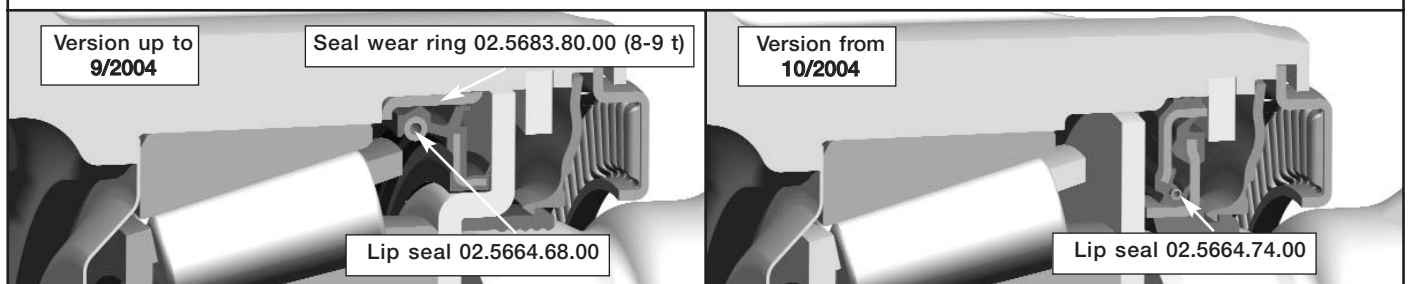
Item	Description / Remark	SH.. / SKH.. ECO ^{Plus} 8 - 9 t --.48.----.---		SH.. / SKH.. ECO ^{Plus} 10 - 12 t --.50.----.---	
		BPW code no.	Dimension	BPW code no.	Dimension
380	Brake disc	see page 24		see page 24	
418	Repair kit roller bearing without axle nut and hub cap (Item 420, 422, 423, 424, 430, 431, 441 - 445)	09.801.06.26.0		09.801.06.27.0	
420	Thrust washer cpl. (Item 421, 422, 424)			05.370.07.65.0	
421	Thrust washer			03.370.07.62.0	Ø 97 / 177 / 199 x 34
422	Lip seal	02.5664.68.00 (up to 9/2004)	Ø 120 / 157.5 x 20	02.5664.58.00	Ø 151 / 160 x 12.5
422	Lip seal	02.5664.74.00 (from 10/2004)	Ø 117.5 / 158 x 17,5		
423	Ring	02.5683.80.00 (up to 9/2004)	Ø 151 / 157.6 x 20	02.5683.63.00	Ø 151 / 160 x 12.5
424	O-Ring			02.5678.00.00	Ø 100 x 3
428	Dirt seal	03.120.48.15.0	Ø 117,5 / 160 x 9.5	03.120.48.13.0	Ø 133 / 168 x 15
430	Roller bearing	02.6408.92.00	33118	02.6408.92.00	33118
431	Disc protector	03.010.93.34.0	Ø 94 / 149 x 8.5	03.010.93.34.0	Ø 94 / 149 x 8.5
432	Seal	03.120.45.15.0	Ø 67 / 95 x 49.5	03.120.45.16.0	Ø 67 / 93 x 8.5
435	Hub	see page 32		see page 32	
437	Circlip	02.5606.58.90	158 x 4 / 472	02.5606.60.90	140 x 4 / 472
438	Circlip	02.5606.22.90	122 x 4 / 472	02.5606.22.90	122 x 4 / 472
440	Thrust washer	03.370.26.24.0	Ø 71 / 108 x 8	03.370.26.24.0	Ø 71 / 108 x 8
441	Roller bearing	02.6407.67.00	33213	02.6407.67.00	33213
445	Washer	03.320.64.01.0	Ø 53 / 76 x 5.8	03.320.64.01.0	Ø 53 / 76 x 5.8
446	Axle nut	05.266.47.06.0	M 52 x 2 / SW 95	05.266.47.06.0	M 52 x 2 / SW 95
447	Locking piece	03.277.00.07.0		03.277.00.07.0	
448	Locking ring	03.188.04.10.0		03.188.04.10.0	
460	Hub cap (standard) Observe hub cap thread!	03.212.25.30.0 03.212.25.31.0	M 135 x 2 / SW 110 M 136 x 2.5 / SW 110	03.212.25.30.0 03.212.25.31.0	M 135 x 2 / SW 110 M 136 x 2.5 / SW 110



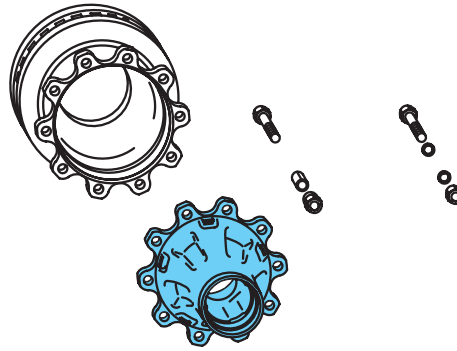
In October 2004, BPW ECO^{Plus} wheel bearings were **changed over** to the new ECO^{Plus} seal system **ECO^{Seal}**. Amongst other aspects, the primary sealing lip no longer seals directly against its sealing partner (hub race), but instead against a race integrated in the seal itself. This new design has made it possible to reduce the circumferential speed of the seal significantly, and with it the amount of wear. In addition, the wheel bearing is better protected against dirt penetration due to the dust and dirt sealing lips in front of the bearing.

The **changeover of series production** started with the modification of the **6.5 - 9 t ECO^{Plus} bearing with 120 mm offset**. When the new seal 02.5664.74.00 is installed into existing bearings, the former race of the hub (in 6.5 - 9 t bearing: 02.5683.80.00) serves as a check stop. As a result, it **must be left in its former installation position** and is not allowed to be removed. The components of the BPW repair kits have been adapted accordingly.

For more information, please refer to the BPW website at www.bpw.de (latest News/BPW News).



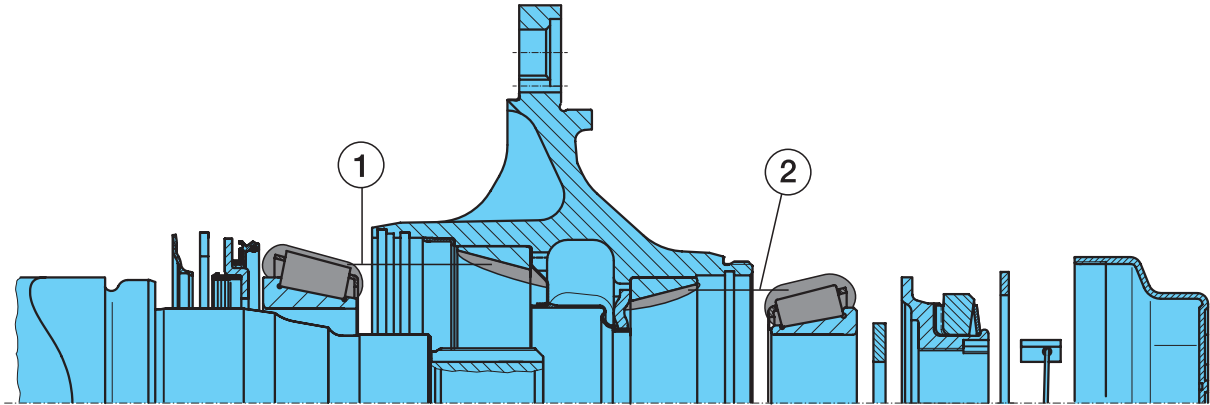
24 ECO^{Plus} wheel hubs



	Axle load / hub	Hub dimension	Complete hub	Remark	Qty.
SKH (SB 3745)	8 - 9 t				
	03.272.43.10.0	M 136 x 2.5 / 10 x Ø 22	09.801.06.07.0	SKHS.. / SKHZ.. ECO ^{Plus}	2
	03.272.43.14.2 ¹⁾	M 136 x 2.5 / 10 x Ø 22	09.801.06.58.0	SKHB.. ECO ^{Plus} (ET 120!)	2
	03.272.46.28.2 ¹⁾	M 136 x 2.5 / 8 x Ø 22	09.801.06.69.0	SKHS.. / SKHZ.. ECO ^{Plus}	2
	10 - 12 t				
	03.272.43.13.0	M 136 x 2.5 / 10 x Ø 22	09.801.06.22.0	SKH.. ECO ^{Plus}	2
	03.272.43.18.0	M 136 x 2.5 / 10 x Ø 22	09.801.06.83.0	SKHZM.. ECO ^{Plus}	2
03.272.46.30.2 ¹⁾	M 136 x 2.5 / 8 x Ø 22	09.801.06.59.0	SKH.. ECO ^{Plus}	2	
SH (SB 4309 / SB 4345)	8 - 9 t				
	03.272.43.10.0	M 136 x 2.5 / 10 x Ø 22	09.801.06.07.0	SHS.. ECO ^{Plus} / SHZ.. ECO ^{Plus} , steel- and alloy wheels	2
	10 - 12 t				
03.272.43.11.0	M 136 x 2.5 / 10 x Ø 22	09.801.06.62.0	SHS.. ECO ^{Plus} , steel- and alloy wheels	2	
03.272.43.17.0	M 136 x 2.5 / 10 x Ø 22	09.801.06.23.0	SHZ.. ECO ^{Plus} , alloy wheels	2	
SKH..LL (SB 3745)	8 - 9 t				
	03.272.32.05.0	M 135 x 2 / 10 x Ø 22		Replaced by 03.272.43.10.0	2
	03.272.43.10.0	M 136 x 2.5 / 10 x Ø 22	09.801.06.07.0	SHS.. LL ECO ^{Plus}	2
	03.272.43.14.2 ¹⁾	M 136 x 2.5 / 10 x Ø 22	09.801.06.58.0	SHB.. LL ECO ^{Plus} (ET 120!)	2
	03.272.46.28.2 ¹⁾	M 136 x 2.5 / 8 x Ø 22	09.801.06.69.0	SKHS.. LL / SKMZ.. LL ECO ^{Plus}	2
	10 t				
03.272.43.13.0	M 136 x 2.5 / 10 x Ø 22	09.801.06.22.0	SKMS.. LL / SKMZ.. LL ECO ^{Plus}	2	
03.272.46.30.2 ¹⁾	M 136 x 2.5 / 8 x Ø 22	09.801.06.59.0	SKMS.. LL / SKMZ.. LL ECO ^{Plus}	2	
SH..LL (SB 4309 / SB 4345)	8 - 9 t				
	03.272.43.10.0	M 136 x 2.5 / 10 x Ø 22	09.801.06.07.0	SHS..LL ECO ^{Plus}	2
	03.272.43.14.2 ¹⁾	M 136 x 2.5 / 10 x Ø 22	09.801.06.58.0	SHB..LL ECO ^{Plus} (ET 120!)	2
	10 - 12 t				
03.272.43.11.0	M 136 x 2.5 / 10 x Ø 22	09.801.06.62.0	SHS.. ECO ^{Plus} , steel- and alloy wheels	2	

1) = ECO^{Seal}

Grease filling per wheel hub



The ECO^{Plus} hub system is designed for the use of longlife grease. On expiry of the guarantee, the roller bearings, the inside of the hub and the seals are to be thoroughly cleaned (with diesel oil), dried, checked to see if they can be re-used, and regreased every three years when used off-road, or every 5 years when used on the road, within Europe (or every year when off-road and every two years when on the road outside of Europe).

Spray the stub-axle bearing seats with **BPW ECO Assembly and Protection Spray** (BPW no. 02.3521.12.00).

		BPW longlife roller bearing grease ECO-Li ^{Plus} , quantity per tapered roller bearing			
		① Inner		② Outer	
Axle load	Axle type	Roller bearing	Quantity	Roller bearing	Quantity
8000 - 12000 kg	SKH.. 8 - 9 t ECO ^{Plus} SH.. 10 - 12 t ECO ^{Plus}	33118	170 g	32213	120 g

① and ② Work BPW longlife roller bearing grease ECO-Li^{Plus} thoroughly into the spaces between the tapered rollers and the races. Apply remainder to outer races in the hub.
Renew the lip seal and smear contact area with **BPW longlife roller bearing grease ECO-Li^{Plus}**.

Bearing adjustment

1. Unscrew the hub cap.
2. Remove the hooked spring ring with a wedge from the axle nut.
3. Use a spanner to tighten the axle nut whilst at the same time turning the wheel hub, until the axle nut torque limiter operates (do not use an impact driver).
4. Fit the retaining key in the groove between the axle stub and the nut (do not reset the axle nut).
5. Insert the hooked spring ring, depending on the version, behind the flange on the axle nut or in the thread on the axle stub.
6. Screw on hub cap and tighten to 800 Nm.

BPW longlife roller bearing grease ECO-Li ^{Plus}	Container	BPW Code no.
	0.4 kg Cartridge	02.1040.45.00
	5 kg Bucket	02.1040.47.00
	25 kg Bucket	02.1040.49.00
	50 kg Drum	02.1040.50.00

26 Brake cylinders

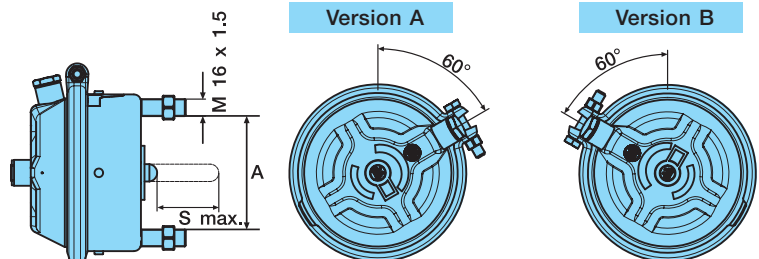
BPW brake cylinders come with a range of special features justifying their high quality level:

- The cylinder size and part number are indelibly embossed on the unit
- Parts which are critical to function can be traced back through the QA system by means of their type plate data
- The extended compressed air connection makes them easy to install
- Double seals on the twin compartment
- Effective anti-corrosion protection by powder and Delta Tone coating
- Hard-chromated surface, long service life
- Shot-peened, epoxy-coated compression springs
- Spring-type accumulator chamber in permanent, positive connection
- Long service life thanks to high-performance rubber diaphragms
- Closely sealing bellows
- Chromated aluminium housing

Installation dimensions of BPW brake cylinders:

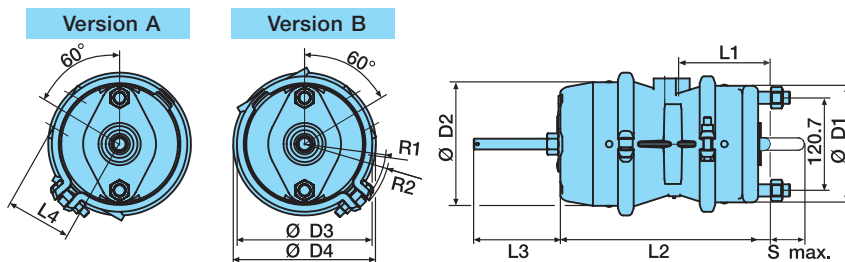
Cylinder size	Actuation	Ø D1 in mm	Ø D2 in mm	Ø D3 in mm	Ø D4 in mm	R1 in mm	R2 in mm	L1 in mm	L2 in mm	L3 in mm	L4 in mm	L5 in mm
14/24"	M-M	145	162	166	185	100	112	88.5	232	95.5	86	
15/24"	M-M	145	162	166	185	100	112	88.5	232	112.5	86	
16/24"	M-M	145	161	166	185	100	112	89.5	233	113	86	
16/16"	M-K	145	162	166		100		91	255	68.5	88.5	78
18/24"	M-M	145	161	166	188.5	100	112	89.5	233	113	86	
20/24"	M-K	152	174	176		106		97	280	75	97	93
20/24"	M-M	152	161	176.5	188.5	107	112	103.5	258	113	86	
22/24"	M-K	162	174	186		114		99	282	75	99	93
24/24"	M-K	162	174	186		114		99	282	75	99	93

Diaphragm cylinders

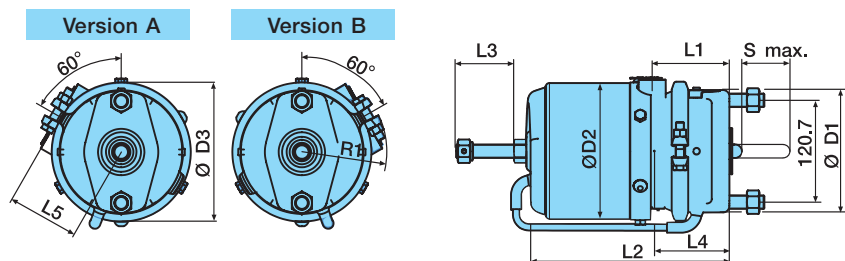


Cylinder size	Brake cylinder version		Test report	Connection dimension A in mm	Piston stroke S max. (mm)	Compressed air cylinder	
	BPW code number version A	BPW code number version B				Piston force THA (N)	Piston stroke SP (mm)
14"	05.444.30.02.0	05.444.30.01.0	BZ 106.0	120.7	60	865p - 290	1.08p + 48
15"	05.444.31.02.0	05.444.31.01.0	BZ 106.0	120.7	60	921p - 280	0.69p + 52
16"	05.444.32.02.0	05.444.32.01.0	BZ 106.0	120.7	60	1062p - 320	0.45p + 54
18"	05.444.33.02.0	05.444.33.01.0	BZ 106.0	120.7	68	1088p - 218	1.51p + 55
20"	05.444.34.02.0	05.444.34.01.0	BZ 106.0	120.7	68	1199p - 239	0.24p + 65
22"	05.444.35.02.0	05.444.35.01.0	BZ 106.0	120.7	68	1297p - 259	0.62p + 65
24"	05.444.36.02.0	05.444.36.01.0	BZ 106.0	120.7	68	1404p - 281	0.20p + 65
27"	05.444.37.02.0	05.444.37.01.0		120.7			

Diaphragm-diaphragm brake cylinder (M-M)



Diaphragm-piston brake cylinder (M-K)

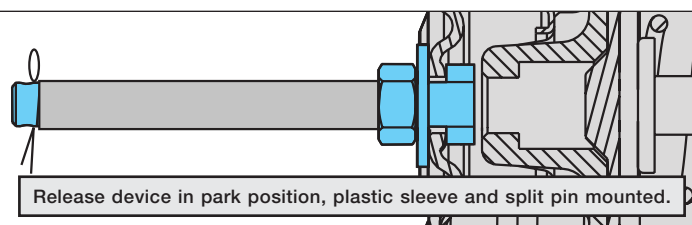
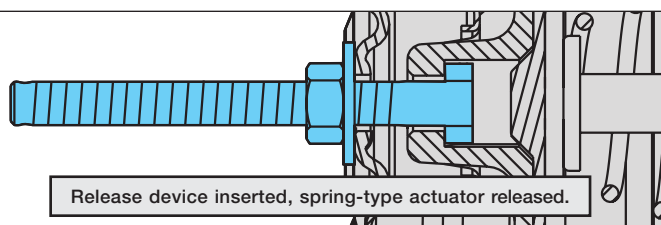


		Brake cylinder version						Compressed air cylinder		Spring-type cylinder	
Cylinder size	Actuation	BPW code number, version A	BPW code number, version B	Mounting kit	Test report	Piston stroke S max. (mm)	Piston force THA (N)	Piston stroke SP (mm)	Piston force TFZ (N)	Release pressure PLS (bar)	
14/24"	M-M	05.444.38.02.0	05.444.38.01.0	05.801.09.77.0	BZ 107.0	57	865p - 290	1.15p + 44	7939 - 71s	4,9	
15/24"	M-M	05.444.39.02.0	05.444.39.01.0	05.801.09.78.0	BZ 107.0	57	921p - 280	0.57p + 50	7939 - 71s	4,9	
16/24"	M-M	05.444.40.02.0	05.444.40.01.0	05.801.09.79.0	BZ 107.0	57	1062p - 320	0.89p + 47	7939 - 71s	4,9	
16/16"	M-K	05.444.41.02.0	05.444.41.01.0	05.801.21.38.0	BZ 118.2	60	1062p - 320	0.84p + 49	8750 - 87s	4,7	
16/16"	M-K	05.444.41.04.0	05.444.41.03.0	05.801.21.39.0	BZ 118.2 *						
18/24"	M-M	05.444.42.02.0	05.444.42.01.0	05.801.09.80.0	BZ 107.0	66	1088p - 218	1.46p + 52	7850 - 68s	5,2	
20/24"	M-K	05.444.43.02.0	05.444.43.01.0	05.801.09.82.0	BZ 118.2	66	1199p - 239	0.74p + 55	10775 - 91s	4,9	
20/24"	M-K	05.444.43.04.0	05.444.43.03.0	05.801.09.97.0	BZ 118.2 *						
20/24"	M-M	05.444.44.02.0	05.444.44.01.0	05.801.09.81.0	BZ 107.0	66	1199p - 239	0.85p + 57	7850 - 68s	5,2	
22/24"	M-K	05.444.45.02.0	05.444.45.01.0	05.801.09.83.0	BZ 118.2	68	1297p - 259	1.12p + 51	10775 - 91s	4,7	
22/24"	M-K	05.444.45.04.0	05.444.45.03.0	05.801.09.98.0	BZ 118.2 *						
24/24"	M-K	05.444.46.02.0	05.444.46.01.0	05.801.09.84.0	BZ 118.2	68	1404p - 281	0.80p + 55	10775 - 91s	4,7	
24/24"	M-K	05.444.46.04.0	05.444.46.03.0	05.801.09.99.0	BZ 118.2 *						

* for top trailing arm



In March 2004, the release device for M/M brake cylinders on disc brake axles were given a new park position. This means the release device is no longer accommodated in the park pocket on the outline of the cylinder, instead it can remain directly in the cylinder cap. All that is required to use the park position is to turn the release device through 90° and then secure it using a hexagon nut. Furthermore, it remains possible to remove the release device completely. For more information, please refer to the BPW website at www.bpw.de (latest News/BPW News).



27 Brake Monitor

How Brake Monitor operates

With the BPW Brake Monitor retrofit kit for our disc brakes, you can check your vehicle from the outside at any time to see if the wear limit has been reached. As soon as only one of the brake pads has worn down by approx. 80% the yellow "Warning" LED on the BPW Brake Monitor starts flashing. Once the minimum pad thickness of 2 mm has been reached, the "Service" indicator changes to red, while the green and yellow LEDs flash alternately. The red SERVICE indicator remains visible even if you have parked the vehicle and there is no electrical power supply to the trailer. This means you can still tell if the wear limit has been reached on at least one brake pad. In this case, you should change the brake pads as soon as possible.

BPW Brake Monitor - Features and benefits

- Longer service life for the brake discs and brake
- No unscheduled downtime
- No expensive follow-on costs (e.g. due to a complete failure)
- The service indicator tells you exactly when a brake pad needs changing, even if there is no operating voltage
- Operates without a separate ECU and does not need EBS
- Individual composition of kits possible because of modules (e.g. for four-axle vehicles)
- Quick and easy to install
- Can easily be retrofitted
- No technical inspection is required, since a general EU certification and hazchem approval have already been obtained.
- Can be connected to EBS for indication in tractor vehicle

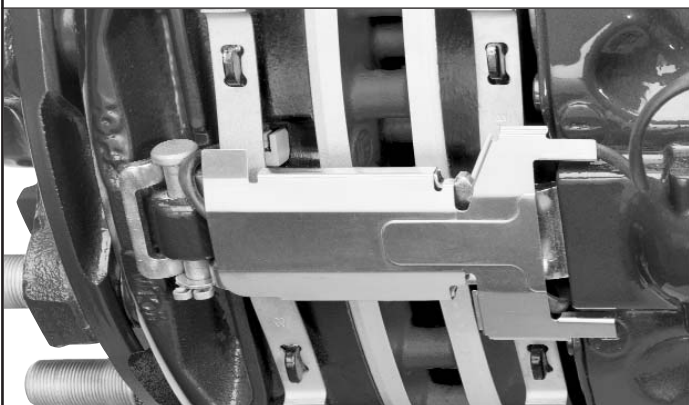


Warning:

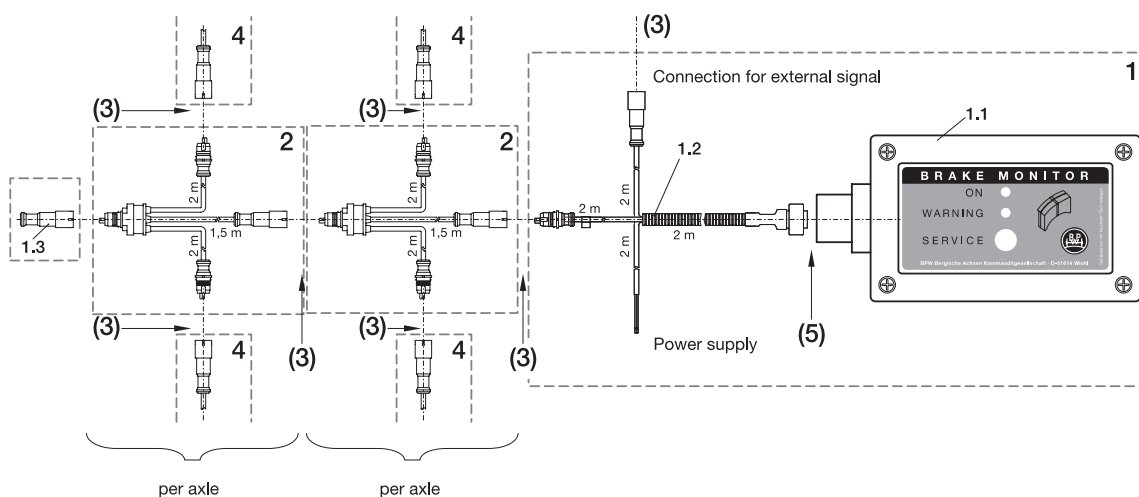
At least one brake pad is approx. 80% worn down!

Service:

At least one brake pad as reached the minimum pad thickness of approx. 2 mm. Have the pads replaced immediately!

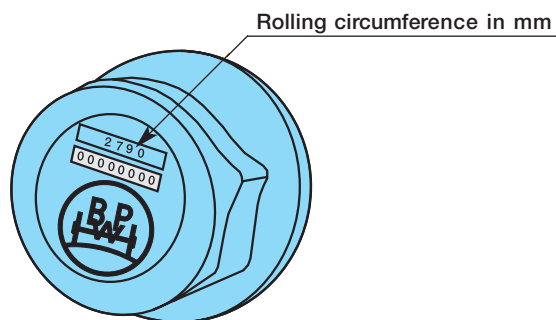


Component list for BPW brake lining wear indicator										
Item	BPW code no.	Designation	Quantity							
1	05.801.60.07.0 incl. 1.1 02.0339.01.00 1.2 02.4312.58.00 1.3 02.3713.08.00	Basis set Brake Monitor Connecting cable Connecting plug	1	1	1	1	1	1	1	1
2	02.4312.57.00	Connection modul	1	2	3	4	2	3	4	
3	Extension 3-pin K/E connector system 02.1819.26.00 02.1819.25.00 02.1819.22.00	1 m 3 m 5 m					1	1	1	
4	05.801.51.70.0	Wear indicator axle set	1	2	3	4	2	3	4	
5	Extension 7-pin DIN bayonet connector system 02.1819.29.00 02.1819.30.00	2 m 10 m								

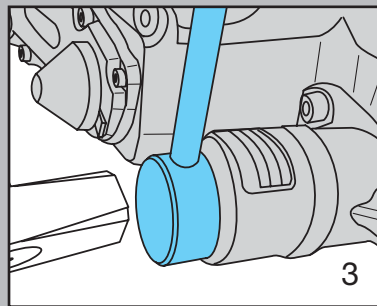
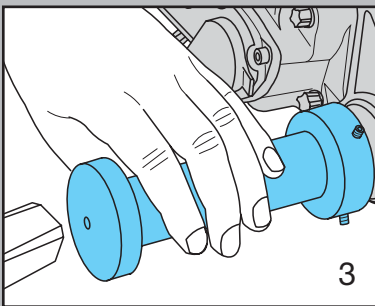
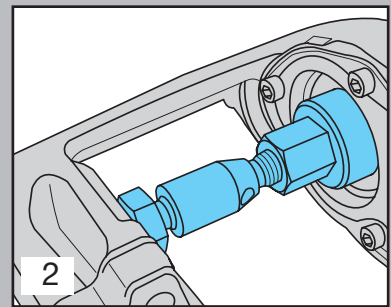
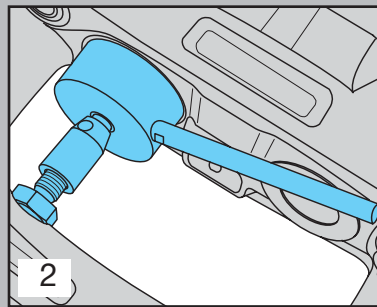
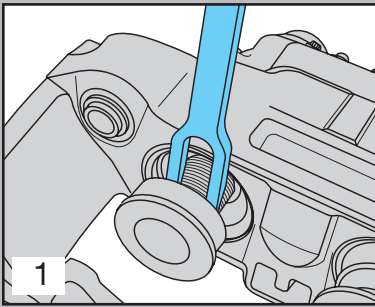


For more information about the Brake Monitor, please refer to the BPW website at www.bpw.de (latest News/BPW News).

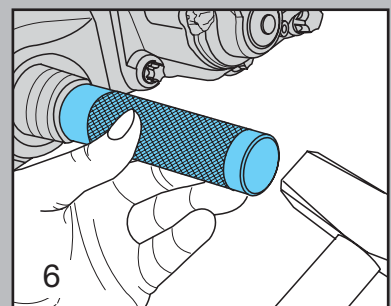
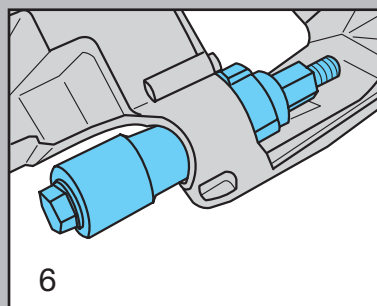
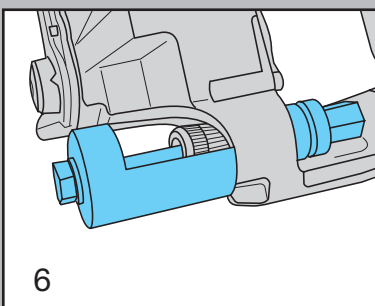
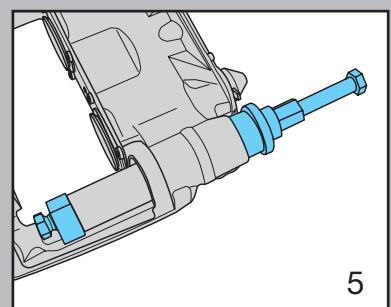
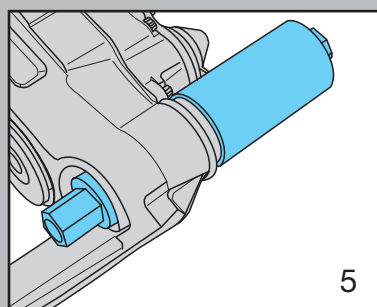
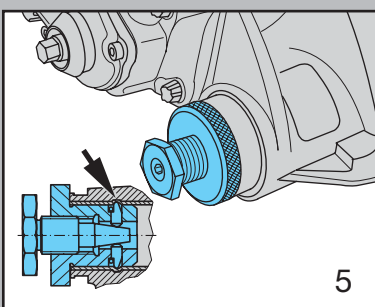
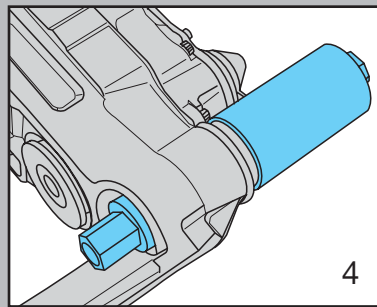
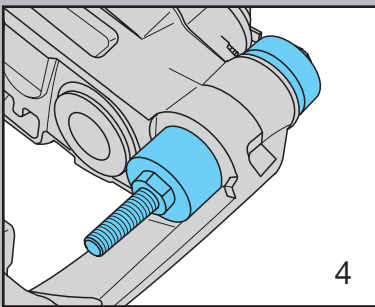
28 BPW ECOMETER



Series	Axle load	Hub cap thread	For tyres:	Rolling circumference in mm	BPW code no.	Qty.
SKH..	6.5 - 10 t	M 136 x 2.5 / SW110	265 / 70 R 19.5	2620 - 2650	05.212.25.38.0	1
			285 / 70 R 19.5	2712 - 2750	05.212.25.39.0	1
			445 / 45 R 19.5	2790	05.212.25.40.0	1
			425 / 55 R 19.5	2960	05.212.25.43.0	1
SH..	6.5 - 12 t		255 / 70 R 22.5	2830 - 2860	05.212.25.41.0	1
			275 / 70 R 22.5	2915	05.212.25.42.0	1
			315 / 70 R 22.5	3015 - 3134	05.212.25.44.0	1
			11.00 R 22.5	3175 - 3220	05.212.25.45.0	1
			385 / 65 R 22.5	3240 - 3260	05.212.25.46.0	1
			12.00 R 22.5	3280 - 3310	05.212.25.47.0	1
			425 / 65 R 22.5	3410 - 3470	05.212.25.48.0	1
			445 / 65 R 22.5	3505	05.212.25.49.0	1

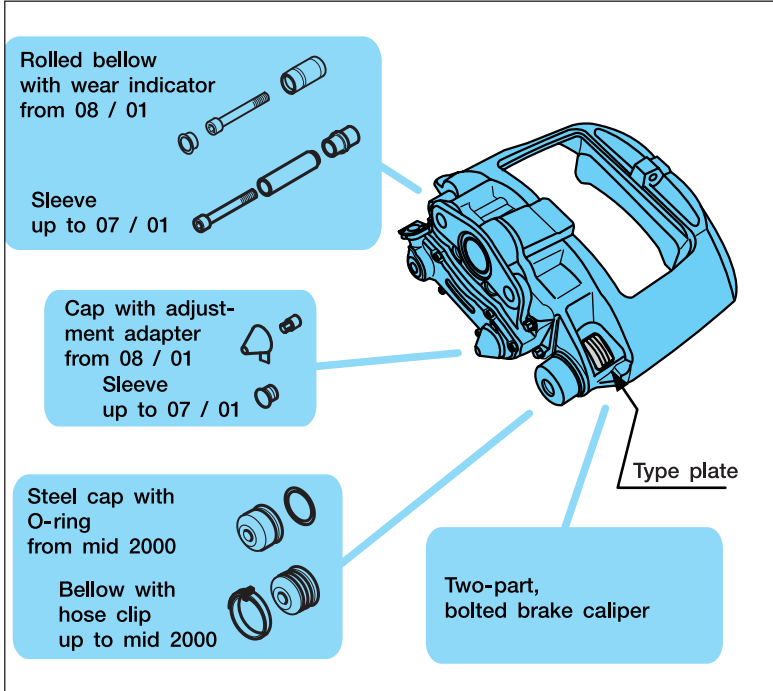


	View
1	Removing thrust pieces with bellows
2	Installing thrust pieces with bellows
2	Pressing in inner secondary seal
3	Renewing brake caliper, fit cover cap
4	Pulling in inner bellows on fixed bearing
4/5	Pulling brass bush on fixed bearing out and in
4/5	Peening brass bush
6	Pulling loose bearing bush out and in
6	Renewing brake caliper, fitting cover cap



29 Disc brake tools

Features of the conventional disc brake



BPW code no.

KNORR code no.

SB 3745 (axial screw connection)

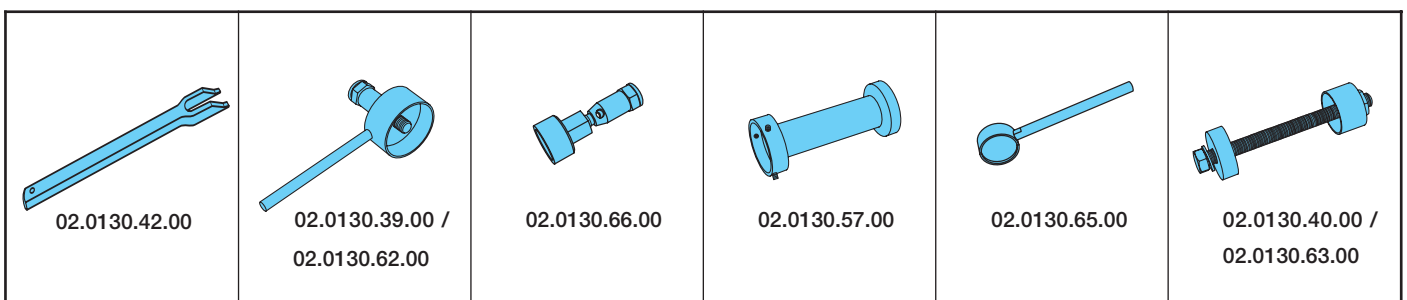
05.362.70.16.0 / 17.0	II 39046F / II 390047F
05.362.70.22.0 / 23.0	II 39048F / II 39049F
05.362.70.22.1 / 23.1	K 000005 / K 000006
05.362.70.22.2 / 23.2	K 000584 / K 000585
05.362.70.26.0 / 27.0	II 39266F / II 39267F
05.362.70.26.1 / 27.1	Z 0017671 / Z 0017672
05.362.70.26.2 / 27.2	K 000115 / K 000116
05.362.70.28.0 / 29.0	II 39485 FMI / II 39484 FMI

SB 4345 (axial screw connection)

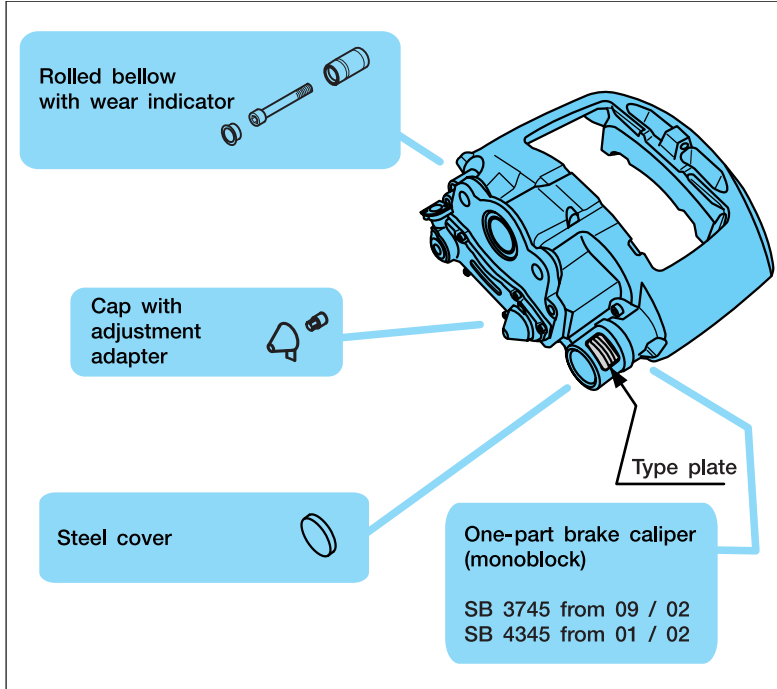
05.362.70.12.0 / 13.0	K 000136 / K 000137
05.362.70.24.0 / 25.0	K 000720 / K 000719

View:

Item	Work stage	Tool name
1	Disassembling thrust pieces with bellows	Pulling fork
2	Fitting thrust pieces with bellows	Pressing tool for thrust piece with bellow
3	Pressing in inner secondary seal	Pressing tool for secondary seal
4	Replacing brake caliper Fitting fixed bearing cover cap	Assembly tool for cap
5	Inserting inner bellow, fixed bearing	Insertor for inner bellow
6	Extracting and inserting brass bush, fixed bearing	Assembly tool for brass bush
7	Caulking brass bush	Caulking tool for brass bush
8	Extracting and inserting bush, movable bearing	Insertor / extractor for guide sleeve / movable bearing
9	Replacing brake caliper, fitting cover cap, movable bearing	Pressing tool for cap



Features of the monoblock disc brake



BPW code no.

KNORR code no.

SB 3745 (axial screw connection)

05.362.70.36.0 / 37.0	K 001117 / K 001118
05.362.70.36.1 / 37.1	K 002654 / K 002655
05.362.70.36.2 / 37.2	K 002934 / K 002935
05.362.70.40.0 / 41.0	K 000584 / K 000585
05.362.70.40.1 / 41.1	K 002656 / K 002657

SB 3745 (tangential screw connection)

05.362.70.60.0 / 61.0	K 001546 / K 001545
05.362.70.60.2 / 61.2	K 003663 / K 003662
05.362.70.60.3 / 61.3	K 004527 / K 004526
05.362.70.66.0 / 67.0	K 002516 / K 002515

SB 4309 (tangential screw connection)

05.362.70.62.0 / 63.0	K 001909 / K 001908
05.362.70.62.1 / 63.1	K 009747 / K 009746
05.362.70.70.0 / 71.0	K 003454 / K 003453
05.362.70.70.1 / 71.1	K 009745 / K 009744

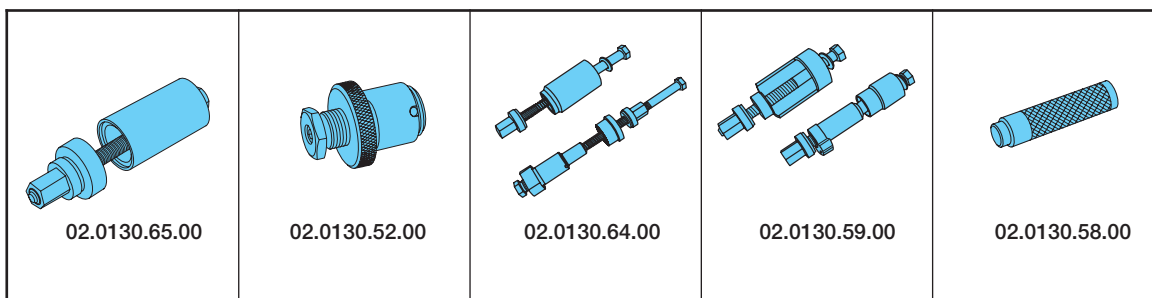
SB 4345 (axial screw connection)

05.362.70.32.0 / 33.0	K 000871 / K 000870
05.362.70.34.0 / 35.0	K 001051 / K 001052
05.362.70.38.0 / 39.0	K 000871 / K 000870
05.362.70.38.1 / 39.1	K 002659 / K 002658
05.362.70.38.2 / 39.2	K 009279 / K 009278
05.362.70.42.0 / 43.0	K 001051 / K 001052
05.362.70.42.1 / 43.1	K 002660 / K 002661
05.362.70.42.2 / 43.2	K 003666 / K 003667
05.362.70.42.3 / 43.3	K 009283 / K 009284

SB 4345 (tangential screw connection)

05.362.70.64.0 / 65.0	K 002247 / K 002246
05.362.70.64.2 / 65.2	K 003635 / K 003664
05.362.70.64.3 / 65.3	K 009282 / K 009281
05.362.70.68.0 / 69.0	K 002518 / K 002517
05.362.70.68.1 / 69.1	K 009278 / K 009277

BPW code no. conventional brake	KNORR code no.	BPW code no. monoblock brake	KNORR tool no.	Tool component parts e.g. T 15 = stamped part number
02.0130.42.00	II 32202	02.0130.42.00	II 32202	T 15
02.0130.39.00	II 19252	02.0130.62.00	Z 004353 (Z 004190)	T 1, T 2, T 3, T 4
-		02.0130.66.00	Z 004361	T 3, T 4, T 9
02.0130.57.00	Z 001105	02.0130.65.00	Z 004197	T 2, T 17
02.0130.40.00	II 19253	02.0130.63.00	Z 004357	T 7, T 8, T 10, T 23
02.0130.41.00	II 19254	02.0130.64.00	Z 004354	T 8, T 12, T 13, T 14, T 16, T 23
02.0130.52.00	II 36797			
02.0130.59.00	Z 004198	02.0130.59.00	Z 004198	T 5, T 6, T 18, T 19, T 20, T 21, T 22, T 23
02.0130.58.00	Z 003934	02.0130.58.00	Z 003934	T 11



30 Wheel studs

Series:	
Single wheels	Twin wheels
<p style="text-align: center;">M 22x1.5</p>	
<p>Stud alignment, steel hub</p> <p style="text-align: center;">L = 80 (89)</p>	<p>Stud alignment, steel hub</p> <p style="text-align: center;">L = 97</p>
<p>Spigot alignment, steel hub</p> <p style="text-align: center;">L = 80 (89)</p>	<p>Spigot alignment, steel hub</p> <p style="text-align: center;">L = 97</p>
<p>Alloy wheels, Ø 26 steel hub</p> <p style="text-align: center;">L = 89</p> <p style="text-align: center;">max. 28</p>	
<p>Alloy wheels, Ø 32, alloy hub, shaft nut</p> <p style="text-align: center;">L = 97</p> <p style="text-align: center;">max. 28</p>	<p>Alloy wheels, Ø 32, steel hub, shaft nut</p> <p style="text-align: center;">L = 97</p> <p style="text-align: center;">max. 44</p>

Item	Description	BPW code no.	Dimension	Qty. / axle
472	Single wheels			
	Wheel stud (for steel and alloy wheels)	03.296.33.11.1	M 22 x 1.5 x 80	16 / 20
		03.296.33.14.1	M 22 x 1.5 x 89	
		03.296.33.12.1	M 22 x 1.5 x 97	
	Twin wheels			
Wheel stud (for steel and alloy wheels)	03.296.33.12.1	M 22 x 1.5 x 97	20	

Item	Description	BPW code no.	Dimension	BPW code no.	Dimension	BPW code no.	Dimension	Qty. / axle
		Stud alignment		Spigot alignment		Alloy wheels		
476	Bush, single wheels			03.112.00.43.0				4
	Bush (for twin wheels)			03.112.00.42.0				4
477	Ring (for twin wheels)	03.310.10.13.0						16 / 20
478	Spring washer	02.5615.22.90	C 22,5 / 74361					16 / 20
479	Wheel nut	03.260.04.12.0	M 22 x 1.5					16 / 20
	Wheel nut (for steel and alloy wheels Ø 26)			05.260.54.10.0	M 22 x 1.5	05.260.54.10.0 (Height 27 mm) 05.260.54.19.0 (Height 50 mm)	M 22 x 1.5	16 / 20
	Shaft nut (for alloy wheels Ø 32, single wheels)					05.260.54.21.1	M 22 x 1.5	16 / 20
	Shaft nut (for alloy wheels Ø 32, twin wheels)					05.260.54.14.1	M 22 x 1.5	16 / 20

Item	Application	Parts group, designation	BPW code no.	Dimension	Qty. / axle
470	SH-axes, SB 4309 / SB 4345, spigot alignment, cap nut SW 32	Wheel stud parts group	09.806.33.04.0		20
472		Wheel stud	03.296.33.14.1	M 22 x 1.5 / 89 / 54	20
476		Bush	03.112.00.43.0 ¹⁾	Ø 22 / 25 x 6	4
479		Wheel nut	03.260.54.19.0	M 22 x 1.5	20
470	SH-axes, SB 4309 / SB 4345, spigot alignment, wheel nut SW 32	Wheel stud parts group	09.806.33.11.0		20
472		Wheel stud	03.296.33.14.1	M 22 x 1.5 / 89 / 54	20
476		Bush	03.112.00.43.0 ¹⁾	Ø 22 / 25 x 6	4
479		Wheel nut	03.260.54.10.0	M 22 x 1.5 - 10	20
470	SH-axes, SB 4309 / SB 4345, stud alignment, wheel nut SW 32	Wheel stud parts group	09.806.33.67.0		20
472		Wheel stud	03.296.33.12.1	M 22 x 1.5 / 97 / 62	20
477		Ring	03.310.10.13.0	Ø 22 / 32 x 5.5	20
478		Spring washer	02.5615.22.90	C 22.5	20
479		Wheel nut	03.260.04.12.0	M 22 x 1.5 - 10	20

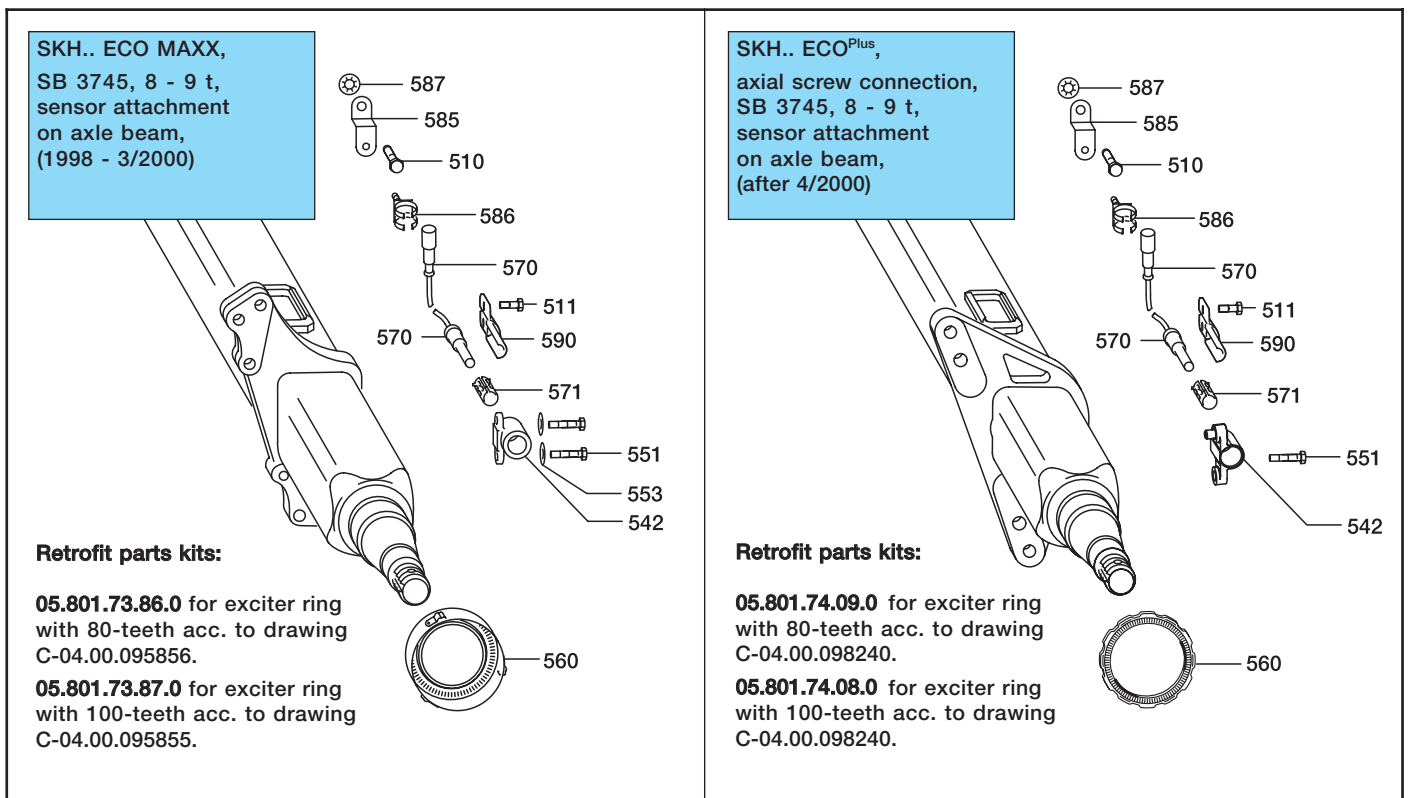
¹⁾ The bush 03.112.00.43.0 is not contained in the wheel stud parts groups 09.806.33.04.0 and 09.806.33.11.0!

30 Wheel studs

Item	Application	Parts group, designation	BPW code no.	Dimension	Qty. / axle
470	SH-axes, SB 4309 / SB 4345, alloy wheel Ø 26 without offset, wheel nut SW 32	Wheel stud parts group	09.806.33.68.0		20
472		Wheel stud	03.296.33.12.1	M 22 x 1.5 / 97 / 62	20
479		Wheel nut	03.260.54.10.0	M 22 x 1.5	20
470	SH-axes, SB 4309 / SB 4345, alloy wheel Ø 26 without offset, cap nut SW 33	Wheel stud parts group	09.806.33.69.0		20
472		Wheel stud	03.296.33.12.1	M 22 x 1.5 / 97 / 62	20
479		Wheel nut	03.260.54.19.0	M 22 x 1.5	20
470	SKH-axes, SB 3745, stud alignment, wheel nut SW 32	Wheel stud parts group	09.806.33.57.0		16 / 20
472		Wheel stud	03.296.33.14.1	M 22 x 1.5 / 89 / 54	16 / 20
478		Spring washer	02.5615.22.90	C 22,5	16 / 20
479		Wheel nut	03.260.04.12.0	M 22 x 1.5 - 10	16 / 20
470	SKH-axes, SB 3745, stud alignment, wheel nut SW 32	Wheel stud parts group	09.806.33.67.0		16 / 20
472		Wheel stud	03.296.33.12.1	M 22 x 1.5 / 97 / 62	16 / 20
477		Bush	03.310.10.13.0	Ø 22 / 32 x 5.5	16 / 20
478		Spring washer	02.5615.22.90	C 22.5	16 / 20
		Wheel nut	03.260.04.12.0	M 22 x 1.5 - 10	16 / 20
470	SKH-axes SB 3745, stud alignment, wheel nut SW 32	Wheel stud parts group	09.806.33.75.0		16 / 20
472		Wheel stud	03.296.33.11.1	M 22 x 1.5 / 80 / 45	16 / 20
478		Spring washer	02.5615.22.90	C 22.5	16 / 20
479		Wheel nut	03.260.04.12.0	M 22 x 1.5 - 10	16 / 20
470	SKH-axes, SB 3745, spigot alignment, cap nut SW 33	Wheel stud parts group	09.806.33.04.0		16 / 20
472		Wheel stud	03.296.33.14.1	M 22 x 1.5 / 89 / 54	16 / 20
476		Bush	03.112.00.43.0 ¹⁾	Ø 22 / 25 x 6	4
479		Wheel nut	03.260.54.19.0	M 22 x 1.5	16 / 20
470	SKH-axes, SB 3745, spigot alignment, wheel nut SW 32	Wheel stud parts group	09.806.33.11.0		16 / 20
472		Wheel stud	03.296.33.14.1	M 22 x 1.5 / 89 / 54	16 / 20
476		Bush	03.112.00.43.0 ¹⁾	Ø 22 / 25 x 6	4
479		Wheel nut	03.260.54.10.0	M 22 x 1.5	16 / 20
470	SKH-axes, SB 3745, spigot alignment, wheel nut SW 32	Wheel stud parts group	09.806.33.76.0		16 / 20
472		Wheel stud	03.296.33.11.1	M 22 x 1.5 / 80 / 45	16 / 20
476		Bush	03.112.00.43.0 ¹⁾	Ø 22 / 25 x 6	4
479		Wheel nut	03.260.54.10.0	M 22 x 1.5	16 / 20
470	SKH-axes, SB 3745, spigot alignment, wheel nut SW 32	Wheel stud parts group	09.806.33.77.0		16 / 20
472		Wheel stud	03.296.33.11.1	M 22 x 1.5 / 80 / 45	16 / 20
476		Bush	03.112.00.43.0 ¹⁾	Ø 22 / 25 x 6	4
479		Wheel nut	03.260.54.19.0	M 22 x 1.5	16 / 20
470	SKH-axes, SB 3745, alloy wheel Ø 26 without offset, wheel nut SW 32	Wheel stud parts group	09.806.33.68.0		16 / 20
472		Wheel stud	03.296.33.12.1	M 22 x 1.5 / 97 / 62	16 / 20
479		Wheel nut	03.260.54.10.0	M 22 x 1.5	16 / 20
470	SKH-axes, SB 3745, alloy wheel Ø 26 without offset cap nut SW 33	Wheel stud parts group	09.806.33.69.0		16 / 20
472		Wheel stud	03.296.33.12.1	M 22 x 1.5 / 97 / 62	16 / 20
479		Wheel nut	03.260.54.19.0	M 22 x 1.5	16 / 20
470	SKH-axes, SB 3745, alloy wheel Ø 32 without ET, shaft nut SW 33	Wheel stud parts group	09.806.33.79.0		16 / 20
472		Wheel stud	03.296.33.12.1	M 22 x 1.5 / 97 / 62	20
479		Wheel nut	03.260.54.21.1	M 22 x 1.5 - 10	20

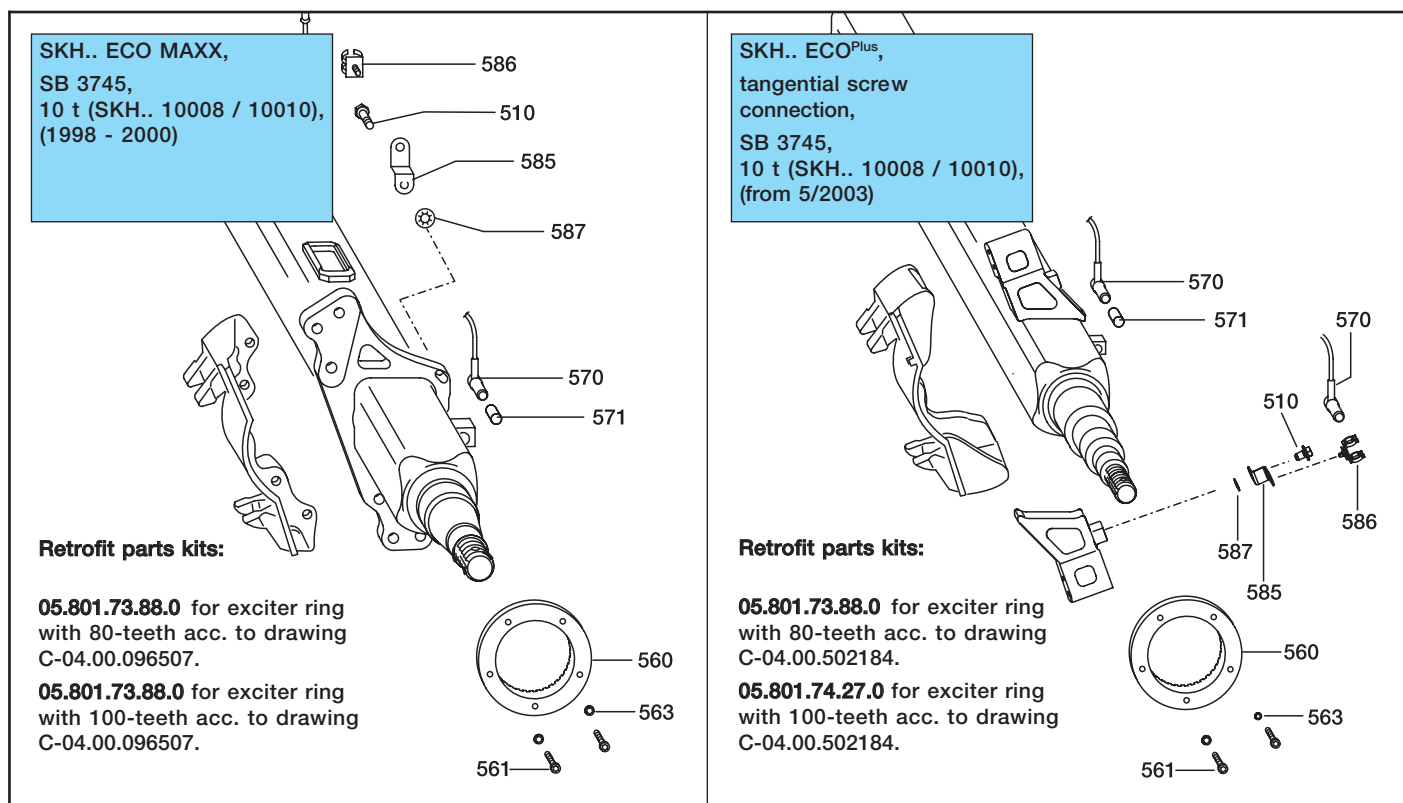
1) The bush 03.112.00.43.0 is not contained in the wheel stud parts groups 03.112.00.43.0, 09.806.33.04.0, ..11.0, ..76.0 and ..77.0!

SKH..				SKH.. ECO MAXX, SB 3745, 8 - 9 t, sensor attachment on axle beam, (1998 - 3/2000)	SKH.. ECOPlus, axial screw connection, SB 3745, 8 - 9 t, sensor attachment on axle beam, (after 4/2000)		
Item	Description	BPW code no.	Dimension	Components	Qty.	Components	Qty.
510	Locking screw	02.5071.22.00	M 10 x 15	02.5071.22.00	2	02.5071.22.00	2
511	Locking screw	02.5071.23.00	M 8 x 20	02.5071.23.00	2	02.5071.23.00	2
542	Sensor bracket	03.189.12.02.0	L: 19.5	03.189.12.02.0	2		
542	Sensor bracket	03.189.14.61.0				03.189.14.61.0	2
551	Cylinder cap screw	02.5015.94.80	M 6 x 12 - 8.8	02.5015.94.80	4		
551	Locking screw	02.5071.35.00	M 8 x 18			02.5071.35.00	2
553	Spring washer	02.5601.06.90	A 6	02.5601.06.90	4		
560	Exciter Ring 100-teeth	05.310.07.30.1	Ø 156 / SKH.. 9010	05.310.07.30.1	2		
560	Exciter Ring 80-teeth	05.310.07.29.1	Ø 156 / SKH.. 9008	05.310.07.29.1	2		
560	Exciter Ring 100-teeth	03.310.08.51.0	Ø 156 / SKH.. 9010			03.310.08.51.0	2
560	Exciter Ring 80-teeth	03.310.08.53.0	Ø 156 / SKH.. 9008			03.310.08.53.0	2
570	Sensor	02.3317.07.00	L = 350	02.3317.07.00	2	02.3317.07.00	2
571	Bush	02.0316.59.00		02.0316.59.00	2	02.0316.59.00	2
585	Support	03.189.07.35.0		03.189.07.35.0	2	03.189.07.35.0	2
586	Support	02.1421.11.00		02.1421.11.00	2	02.1421.11.00	2
587	Serrated lock washer	02.5414.11.90	A 10.5	02.5414.11.90	2	02.5414.11.90	2
590	Heat protection plate	03.165.24.64.0		03.165.24.64.0	2	03.165.24.64.0	2
9000	Special silicone grease	02.1040.17.00		02.1040.17.00	1	02.1040.17.00	1



31 ABS parts

SKH..				SKH.. ECO MAXX, SB 3745, 10 t (SKH.. 10008 / 10010), (1998 - 2000)	SKH.. ECO ^{Plus} , tangential screw connection, SB 3745, 10 t (SKH.. 10008 / 10010), (from 5/2003)		
Item	Description	BPW code no.	Dimension	Components	Qty.	Components	Qty.
510	Locking screw	02.5071.22.00	M 10 x 15	02.5071.22.00	2	02.5071.22.00	2
560	Exciter Ring 100-teeth	03.310.09.39.0	Ø 215 / SKH.. 9010	03.310.09.39.0	2	03.310.09.39.0	2
560	Exciter Ring 80-teeth	03.310.09.38.0	Ø 215 / SKH.. 9008	03.310.09.38.0	2	03.310.09.38.0	2
561	Cylinder cap screw	02.5015.48.82	M 6 x 30	02.5015.48.82	10	02.5015.48.82	10
563	Spring washer	02.5611.06.90	A 6	02.5611.06.90	10	02.5611.06.90	10
570	Sensor	02.3317.05.00		02.3317.05.00	2	02.3317.05.00	2
571	Bush	02.0316.59.00		02.0316.59.00	2	02.0316.59.00	2
585	Support	03.189.07.35.0			2	03.189.07.35.0	2
585	Support	03.189.07.72.0		03.189.07.72.0	2	03.189.07.72.0	2
586	Support	02.1421.11.00		02.1421.11.00	2	02.1421.11.00	2
587	Serrated lock washer	02.5414.11.90	A 10.5	02.5414.11.90	2	02.5414.11.90	2
9000	Special silicone grease	02.1040.17.00		02.1040.17.00	1	02.1040.17.00	1



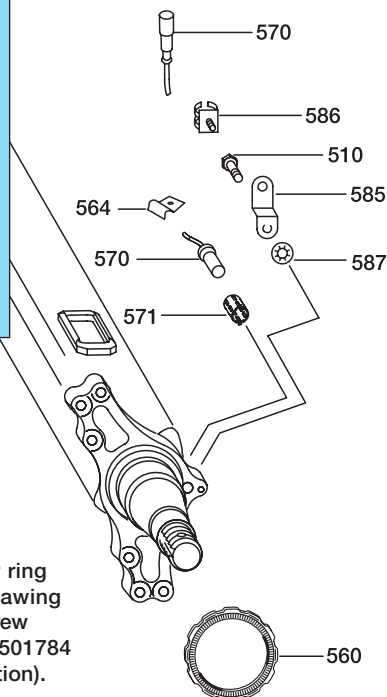
SKH..., SH..

SKHB.. 9010 ECOPlus,
axial screw connection,
after 8/2000;
SKHB.. 9010 ECOPlus,
tangential screw connection,
after 5/2003;
SHB.. 9010 ECOPlus,
tangential screw connection,
after 5/2003;
SB 3745, SB 4309,
sensor attachment in
backing plate

SKH.. ECOPlus,
tangential screw connection,
after 5/2003;
SH.. ECOPlus,
tangential screw connection,
after 5/2003;
8 - 9 t
SB 3745, SB 4309, SB 4345

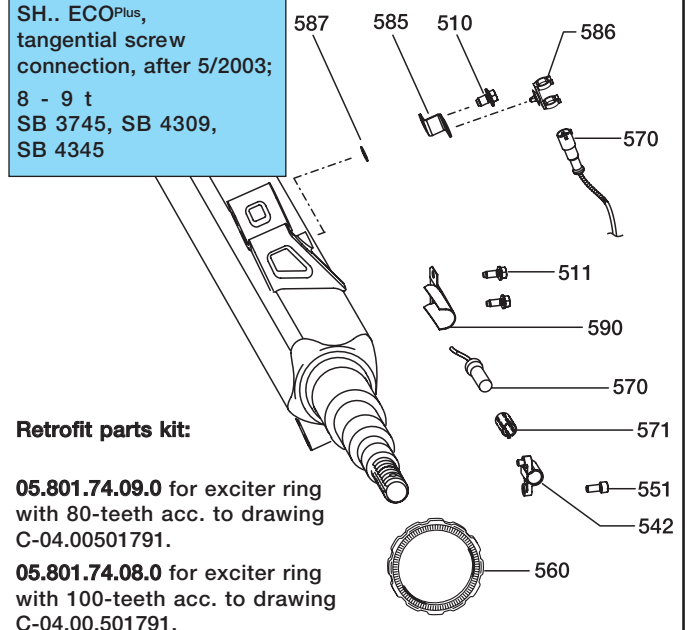
Pos. Nr.	Description	BPW code no.	Dimension	Components	Qty.	Components	Qty.
510	Locking screw	02.5071.22.00	M 10 x 15	02.5071.22.00	2	02.5071.22.00	2
511	Locking screw	02.5071.23.00	M 8 x 20			02.5071.23.00	2
542	Sensor bracket	03.189.14.61.0				03.189.14.61.0	2
551	Locking screw	02.5071.35.00	M 8 x 18			02.5071.35.00	2
560	Exciter Ring 100-teeth	03.310.08.51.0	Ø 156 / SKH.. 9010	03.310.08.51.0		03.310.08.51.0	2
560	Exciter Ring 80-teeth	03.310.08.53.0	Ø 156 / SKH.. 9008			03.310.08.53.0	2
564	Clip	02.3507.32.00		02.3507.32.00	2		
570	Sensor	02.3317.07.00	L = 350	02.3317.07.00	2	02.3317.07.00	2
571	Bush	02.0316.59.00		02.0316.59.00	2	02.0316.59.00	2
585	Support	03.189.07.72.0		03.189.07.35.0	2	03.189.07.35.0	2
586	Support	02.1421.11.00		02.1421.11.00	2	02.1421.11.00	2
587	Serrated lock washer	02.5414.11.90	A 10.5	02.5414.11.90	2	02.5414.11.90	2
590	Heat protection plate	03.165.24.64.0			2	03.165.24.64.0	2
9000	Special silicone grease	02.1040.17.00		02.1040.17.00	1	02.1040.17.00	1

SKHB.. 9010 ECOPlus,
axial screw connection,
after 8/2000;
SKHB.. 9010 ECOPlus,
tangential screw
connection, after 5/2003;
SHB.. 9010 ECOPlus,
tangential screw
connection, after 5/2003;
SB 3745, SB 4309,
sensor attachment
in backing plate


Retrofit parts kit:

05.801.74.07.0 for exciter ring with 100-teeth acc. to drawing C-04.00.500177 (axial screw connection) and C-04.00.501784 (tangential screw connection).

SKH.. ECOPlus,
tangential screw
connection, after 5/2003;
SH.. ECOPlus,
tangential screw
connection, after 5/2003;
8 - 9 t
SB 3745, SB 4309,
SB 4345

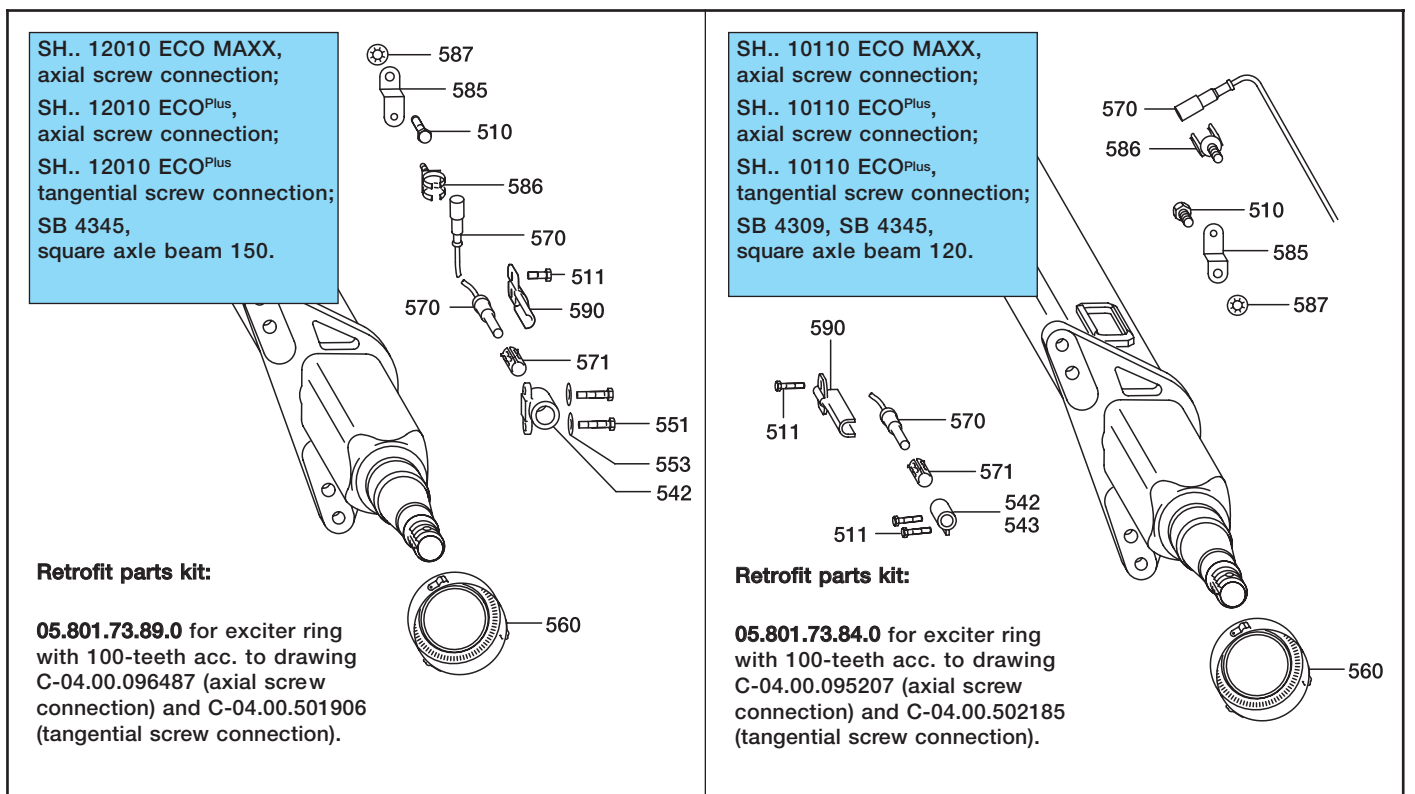

Retrofit parts kit:

05.801.74.09.0 for exciter ring with 80-teeth acc. to drawing C-04.00501791.

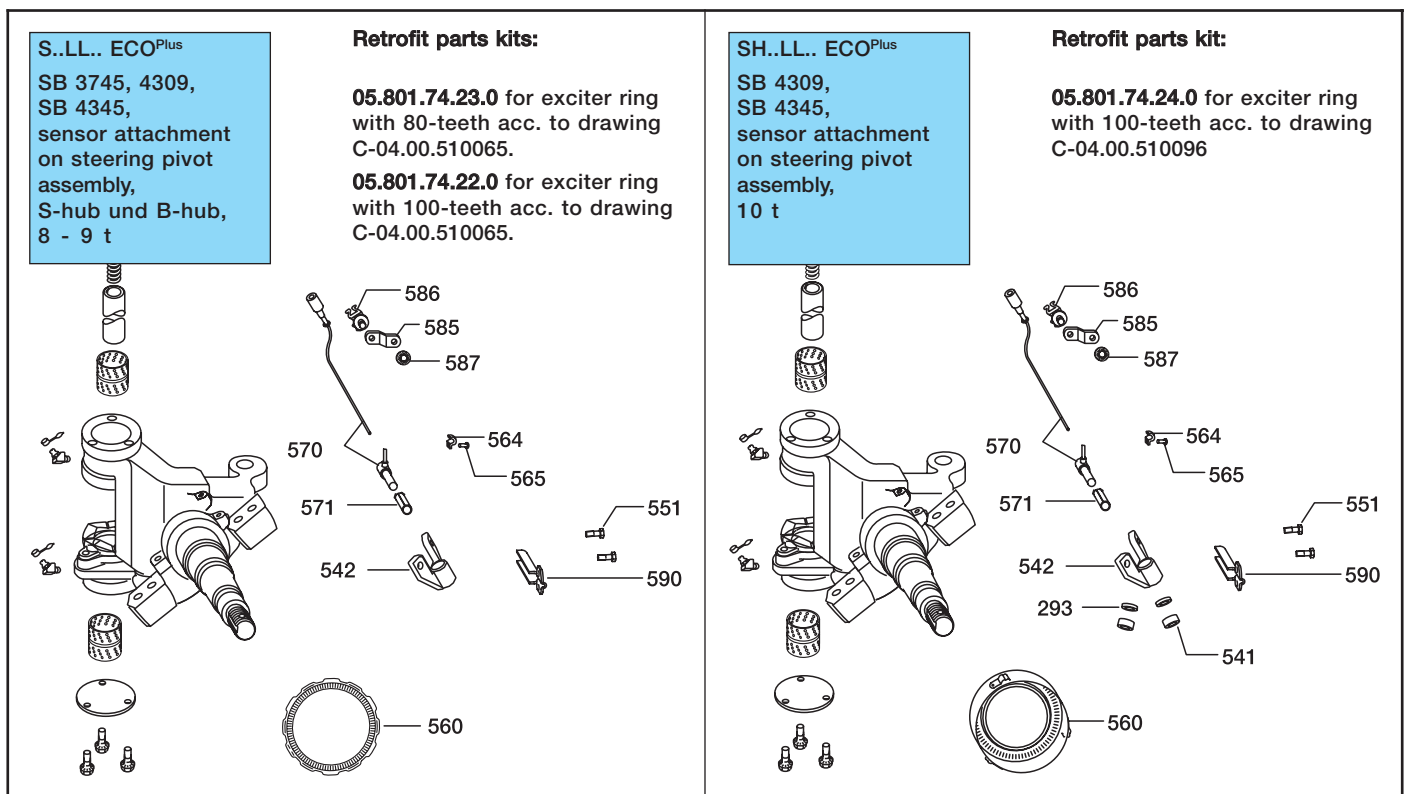
05.801.74.08.0 for exciter ring with 100-teeth acc. to drawing C-04.00.501791.

31 ABS parts

SH..				SH.. 12010 ECO MAXX, axial screw connection; SH.. 12010 ECO ^{Plus} , axial screw connection; SH.. 12010 ECO ^{Plus} tangential screw connection; SB 4345, square axle beam 150.	SH.. 10110 ECO MAXX, axial screw connection; SH.. 10110 ECO ^{Plus} , axial screw connection; SH.. 10110 ECO ^{Plus} , tangential screw connection; SB 4309, SB 4345, square axle beam 120.		
Item	Description	BPW code no.	Dimension	Components	Qty.	Components	Qty.
510	Locking screw	02.5071.22.00	M 10 x 15	02.5071.22.00	2	02.5071.22.00	2
511	Locking screw	02.5071.23.00	M 8 x 20	02.5071.23.00	2	02.5071.23.00	6
542	Sensor bracket	03.189.12.02.0	L: 19.5	03.189.12.02.0	2		
542	Sensor bracket	03.189.07.58.0	L: 37.5			03.189.07.58.0	1
543	Sensor bracket	03.189.07.59.0	L: 37.5			03.189.07.59.0	1
551	Cylinder cap screw	02.5015.94.80	M 6 x 12 - 8.8	02.5015.94.80	4		
553	Spring washer	02.5601.06.90	A 6	02.5601.06.90	4		
560	Exciter Ring 100-teeth	05.310.08.50.1	Ø 174	05.310.08.50.1	2	05.310.08.50.1	2
570	Sensor	02.3317.07.00	L = 350	02.3317.07.00	2	02.3317.07.00	2
571	Bush	02.0316.59.00		02.0316.59.00	2	02.0316.59.00	2
585	Support	03.189.07.35.0		03.189.07.35.0	2	03.189.07.35.0	2
586	Support	02.1421.11.00		02.1421.11.00	2	02.1421.11.00	2
587	Serrated lock washer	02.5414.11.90	A 10.5	02.5414.11.90	2	02.5414.11.90	2
590	Heat protection plate	03.165.24.64.0		03.165.24.64.0	2	03.165.24.64.0	2
9000	Special silicone grease	02.1040.17.00		02.1040.17.00	1	02.1040.17.00	1



SKH..LL., SH..LL..				S..LL.. ECO ^{Plus} SB 3745, 4309, SB 4345, sensor attachment on steering pivot assembly, S-hub und B-hub, 8 - 9 t		SH..LL.. ECO ^{Plus} SB 4309, SB 4345, sensor attachment on steering pivot assembly, 10 t	
Item	Description	BPW code no.	Dimension	Components	Qty.	Components	Qty.
293	Washer	02.5401.08.01	A 8,4			02.5401.08.01	4
541	Bush	03.200.71.06.0	Ø 8,5 / 15 x 10			03.200.71.06.0	4
542	Sensor bracket	03.189.14.86.0		03.189.14.86.0	2	03.189.14.86.0	2
551	Self-tapping screw	02.5047.16.00	M8 x 30			02.5047.16.00	4
551	Locking screw	02.5071.35.00	M8 x 18	02.5071.35.00	4		
560	Exciter Ring 100-teeth	05.310.08.50.1	Ø 174 / SH..LL..10010			05.310.08.50.1	2
560	Exciter Ring 100-teeth	03.310.08.51.0	Ø 156 / S..LL..9010	03.310.08.51.0	2		
560	Exciter Ring 80-teeth	03.310.08.53.0	Ø 156 / SKH..LL..9008	03.310.08.53.0	2		
564	Clip (for welded bolt)	02.0326.32.00	1 x 6	02.0326.32.00	4	02.0326.32.00	4
565	Drive pin	02.6005.25.40	Ø 4 x 10	02.6005.25.40	4	02.6005.25.40	4
570	Sensor	02.3317.07.00	L = 350	02.3317.07.00	2	02.3317.07.00	2
571	Bush	02.0316.59.00		02.0316.59.00	2	02.0316.59.00	2
585	Support	03.189.07.72.0		03.189.07.72.0	2	03.189.07.72.0	2
586	Support	02.1421.11.00		02.1421.11.00	2	02.1421.11.00	2
587	Serrated lock washer	02.5414.11.90	A 10.5	02.5414.11.90	2	02.5414.11.90	2
590	Heat protection plate	03.165.03.01.0		03.165.03.01.0	2	03.165.03.01.0	2
9000	Special silicone grease	02.1040.17.00		02.1040.17.00	1	02.1040.17.00	1





BPW-EL-SB-05/1 e

